

IMDA'S ACCREDITATION PROGRAMME

JUNE 2022



Ministry of Communications
and Information



Develop and regulate converging infocomm and media sectors through an emphasis on talent, research, innovation and enterprise



Promote and enforce personal data protection to foster an environment of trust amongst businesses and consumers



National body overseeing cyber security strategy, education and outreach, and industry development



Promotes reading, learning and information literacy by providing a trusted, accessible and globally-connected library and information service

IMDA develops and regulates the converging infocomm & media sectors in a holistic way, creating a dynamic & exciting sector filled with opportunities for growth, through an emphasis on talent, research, innovation & enterprise.

DIGITAL CHAMPION



- Drive **digitalisation** across industries
- Supporting a **digitally enabled workforce**

INDUSTRY DEVELOPER



- Develop **digital tech & media industries** as an **engine of growth** for Singapore
- Foster a **data ecosystem** for the digital economy

ENABLER



- **Master-planner** for **digital infrastructure, connectivity & standards**
- Prepare **tech & media manpower**, and segments of society to be **digitally-ready**

REGULATOR & PROTECTOR



- Ensure **resilient telecom & broadcast networks**
- Govern **market conduct** and **protect consumer interest** thru' infocomm, media, postal and data protection **regulation**

As Singapore moves towards becoming a Digital Economy, IMDA aims to bolster Singapore's tech ecosystem to develop the **next generation of digital disruptors**, leveraging on Singapore's position as a trusted brand to groom our digital companies that are regionally or globally competitive

ACCREDITED

<https://www.imda.gov.sg/programme-listing/accreditation-at-sgd>
(18-months)

ABOUT

The IMDA Accreditation Programme was launched in July 2014 to **accelerate the growth of promising Singapore-based tech-product companies** to establish credentials, build business traction, grow and compete in the global market as accreditation opens up more opportunities for their products to be showcased and bought.

PROFILE

- ❖ Innovative tech product (B2B) with clear differentiation
- ❖ Sizeable team in Singapore (e.g. Has R&D team, technical consultants, etc)
- ❖ Business expansion plans in Singapore/Asia

SPARK

<https://www.imda.gov.sg/programme-listing/sgd-spark>
(12-months, non-renewable)

The IMDA Spark programme is aimed at addressing the key challenges and **supporting the growth of promising Singapore-based ICM start-ups** through selected Government tools as well as creation of a vibrant, collaborative ecosystem and network.

- ❖ Innovative tech product / services (B2B or B2C) with clear differentiation
- ❖ Initial presence in Singapore with smaller team
- ❖ Grow business in Singapore first before larger commitments

Technical	<ul style="list-style-type: none">• Testing to strengthen product and establish product claims• <i>e.g. Functionality, performance, portability, compatibility, reliability, security, etc</i>
Financial	<ul style="list-style-type: none">• Review past and projected financials to assess company sustainability• <i>e.g. Quality of earnings, cash flow sustainability, business model scalability, robustness of financial projections to downside scenarios, etc</i>
Operational	<ul style="list-style-type: none">• Comprehensive assessment of operational capabilities• <i>e.g. On-site review of internal capabilities, processes, delivery and implementation track records, etc</i>

Value to Enterprise Buyers

- ❖ **Assurance that:**
 - ❖ Products are **secure** and **working as claimed**
 - ❖ **Financially sound** to execute projects

Value to Startups

- ❖ **Strengthened** products and core capabilities
- ❖ **Uncovered** security and functional concerns
- ❖ **Identified gaps** and provided recommendations to improve internal processes

Lighter evaluation process adopted for SPARK companies

EXAMPLE OF PORTFOLIO COMPANIES

In 5 Strategic Tech Areas

Data Analytics / Artificial Intelligence



Enterprise Data / Devt Platform



Cybersecurity



IoT



Media Tech and Others



Unicorns



Scan to view more details

SG:D | ACCREDITATION



SG:D | SPARK



* The portfolio undergoes regular additions of newly accredited companies, and transitioning of existing companies to graduated status (due to successful IPO, merger etc.)

ACCREDITATION PRODUCT BROCHURE



Data Analytics /
Artificial Intelligence



Cybersecurity



IoT

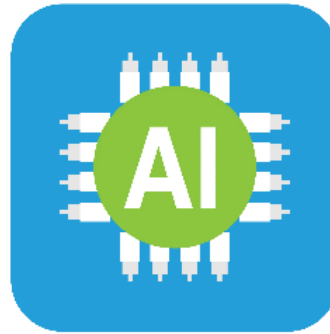


Enterprise Data /
Dev Platform



Media Tech and Others





Data Analytics / Artificial Intelligence

EXECUTIVE SUMMARY

ADVANCE.AI is a leading AI and big data company in Asia. A leader in Artificial Intelligence, digital identity, risk management and credit scoring solutions, it currently partners over 800+ enterprise clients across banking, financial services, fintech, payment, retail and e-commerce sectors. ADVANCE.AI is part of Advance Intelligence Group, one of the largest technology start-up's based in Singapore.

ADVANCE.AI (eKYC) Customer Onboarding solution enables clients to conduct identity verification digitally in numerous scenarios, which facilitates man powering minimizing, business hour limitation lifting, and efficiency improvement for various industries.

PRODUCT FEATURES



ID Document Recognition

AI powered OCR technology to extract ID document information with IQA feature embedded.



Liveness Detection

AI powered biometric detection to judge if it is a real person in front of the camera and detect spoofing.



Face Comparison

AI powered computer vision technology to detect if the live selfie and ID card photo are the same person or not with 99 % accuracy.



Face Search

Utilize facial information to discover fraud history from transaction records.

PRODUCT HIGHLIGHTS

- Highly accurate models
- Customized to South East Asia
- Auto-scalable model
- End to end Data security

W (www.advance.ai)

CATEGORY: DATA ANALYTICS / AI
SUB-CATEGORY: COMPUTER VISION
SPECIALISATION: PEOPLE VERIFICATION

USE CASES – ID OCR

Pain Point

The customer on-boarding process, document collection & identify verification was a very manual process & took up to 20 minutes and prone to mistakes resulting in bad customer experience. Inability to expand offering to new younger clients.

Why Advance.AI

- Highest accuracy compared with competitors
- No development required, ready to use.
- Easy to integrate with current existing front and back-end banking systems.
- Local data center storage to ensure compliance

Benefits:

Customer onboarding speed improved significantly, from hours to seconds without human error

Affle has built leading Omnichannel Audience Intelligence and Analytics Platforms. The platforms help deliver end-to-end omnichannel commerce & marketing solutions with greater ROI and transparency for marketers, commerce marketplaces, app developers and publishers through unique intent insights derived from behavioural signals, attribution and transactional data. Coupled with mTraction (Fraud Analytics as a Service Platform), it helps Marketers detect fraud, not as post mortem but during run time.

MULTI CHANNEL CHATBOT

Support 18 Channels, FAQ, Meeting, Events, Transactional, Forms, Surveys



SMART SEGMENT BUILDER

Create events & action based user cluster segments



EVENT & ACTIVITY ATTRIBUTION

Track App Installs & Traffic by Source



CRM & RE-ENGAGEMENT

18+ Channels with AB Testing.



EVERY DATA POINT BY SOURCE

Installs, Opens & all actions presented by source of acquisition



FRAUD ANALYTICS

Integrated Fraud Analytics via mFaaS in-built algorithms



IN-APP ANALYTICS & COHORTS

Multivariate analytics with cohorts for Revenue & Retention



AI/ML Engine

Ingest digital assets, intelligently catalogue and search.



AD TECH

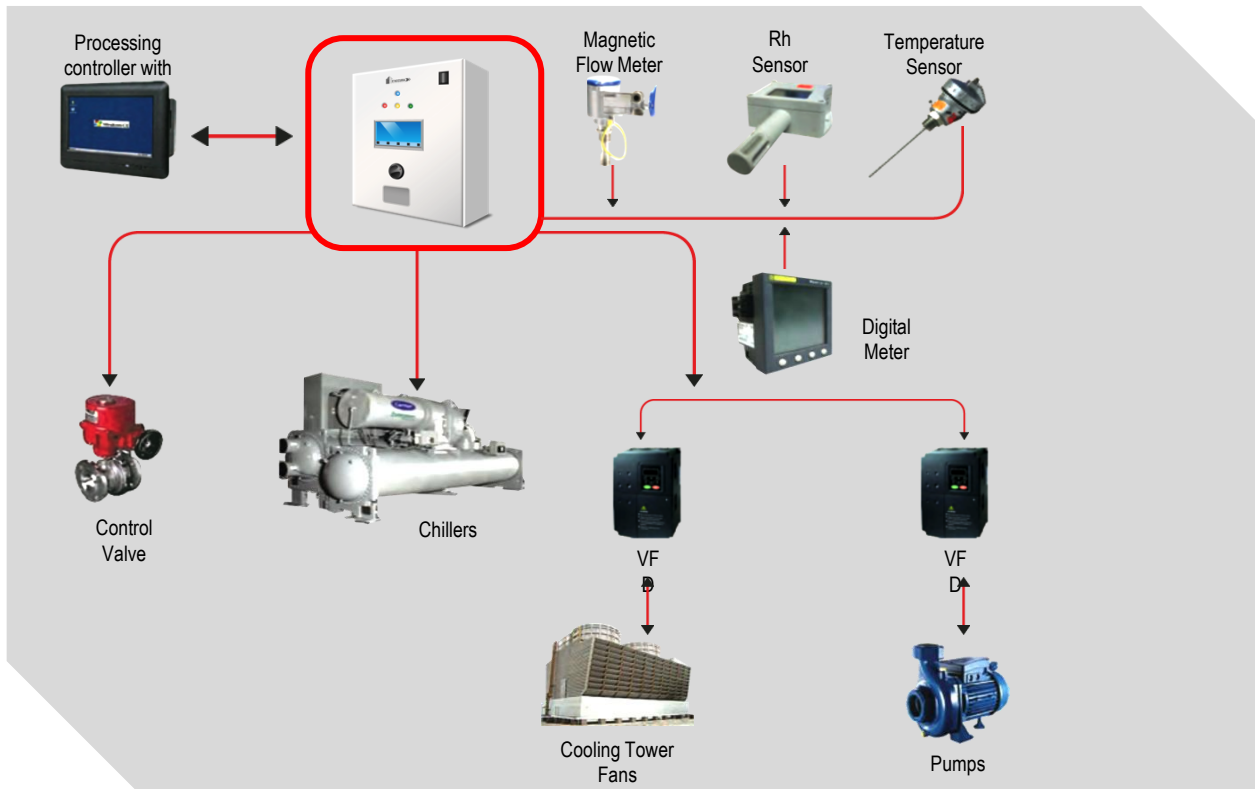


FRAUD ANALYTICS

Data Platform for Citizen CRM

Supports 18 different channels to engage users including a smart omnichannel SDK solution that consolidates the complete user journey and usage data to track effectiveness and improve engagement strategies. Drive overall citizen engagement with AI/ML analytics that utilizes unique intent insights derived from behavioural signals, attributes and transactional data.

BBP is a leading regional company focusing on optimising existing **Air Conditioning and Refrigeration systems** in commercial and industrial buildings. Our proprietary technology optimises **operational performance** of existing systems to achieve **energy savings** without replacing any equipment. BBP offers its service as a fully funded solution without any upfront cost to customers – via a cost savings model.



E2Accura Product Features

- Specializing in optimising existing HVAC systems in commercial and industrial buildings.
- Typically achieve sustained savings of ~30% on existing Chiller Plant energy consumption, resulting in savings anywhere from hundreds of thousands to millions of dollars per year.
- In-house cloud-based backbone to give continuous visibility into performance of each system.
- Minute level data acquisition drives value-added services such as Remote Monitoring & Alarms, and Predictive Maintenance.



ENERGY MANAGEMENT

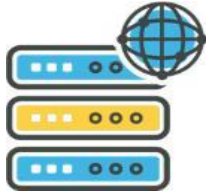
BBP's solution helped a 17 year old central chiller plant at Lumileds Singapore to reach 0.63 kW/RT by improving the efficiency by 27%.

Lumileds became the first manufacturing plant to reach the Green Mark Platinum for existing building.

Founded in 2008, **CashShield** is a fraud management tool which uses a combination of user behaviour analytics, machine learning, big data and a self-developed financial risk management algorithm to detect and prevent fraudulent transactions online merchants face in real-time. **CashShield's** fully automated solution allows partners to scale up aggressively across new markets, optimising revenues while streamlining costs.



Product Features



BIG DATA

Crunches and analyzes unlimited data to map user behavior



MACHINE LEARNING

Detects patterns and micro-changes to weed out fraudsters



FINANCIAL RISK MANAGEMENT ALGORITHM

Views all transactions as part of a portfolio to make decisions



100% CHARGEBACK PROTECTION

Unprecedented for both physical and digital goods



FULLY AUTOMATED SERVICE

Eliminates the need for manual reviews



A.I. OPTIMIZED SOLUTION

Once integrated, solution is optimized to boost sales immediately



OPTIMIZES 3DS AND NON-3DS

Expand your business with CashShield secured non-3DS transactions



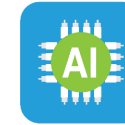
REMOVES UNNECESSARY BUYING LIMITS

Improve customer experience and expand globally with minimized risks



SPEEDY INTEGRATION

Integrate through our AI-automated API platform within a day



FRAUD ANALYTICS

Cashshield Vanguard is a full machine automated solution that protects banks, organizations and businesses from unauthorized logins and promo abuses by identifying and blocking them in real time.

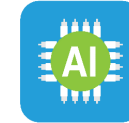
Its core engine analyses and triangulates millions of data points, drawing links and patterns, all in real time.

PRODUCT FEATURES

Confluent is the leading distribution of Apache Kafka. Confluent Platform complements Apache Kafka with community and commercially licensed features. All the features are optional and independently installable. Deploy Apache Kafka along with community features free forever, and try commercial features free for 30 days.

[Confluent Cloud](#), Apache Kafka as a Service, is a **streaming data** service that delivers a **resilient, scalable** streaming platform. Deployable in minutes, it is the ideal streaming data service for the DevOps starved organization or the agile, cloud-first developer on a mission. It's currently available on AWS and Google Cloud with Microsoft Azure coming in the future. Confluent Cloud includes **two** subscription options:

1. [Confluent Cloud Enterprise](#) – a subscription to the streaming data service for all applications, from development to production. With full enterprise capabilities such as SLAs, security and VPC peering to connect to infrastructure while running highly-scaled, real-time applications and pipelines.
2. [Confluent Cloud Professional](#) – a subscription to the streaming data service to meet the needs of projects under development, smaller organizations and applications. It offers the low latency of Kafka and automatic upgrades, among other features to accelerate Kafka application development.



DATA MANAGEMENT

An **event streaming platform** powers a wide variety of applications for two usage patterns:

- (1) real-time data pipelines that connect systems and applications
- (2) event-driven applications

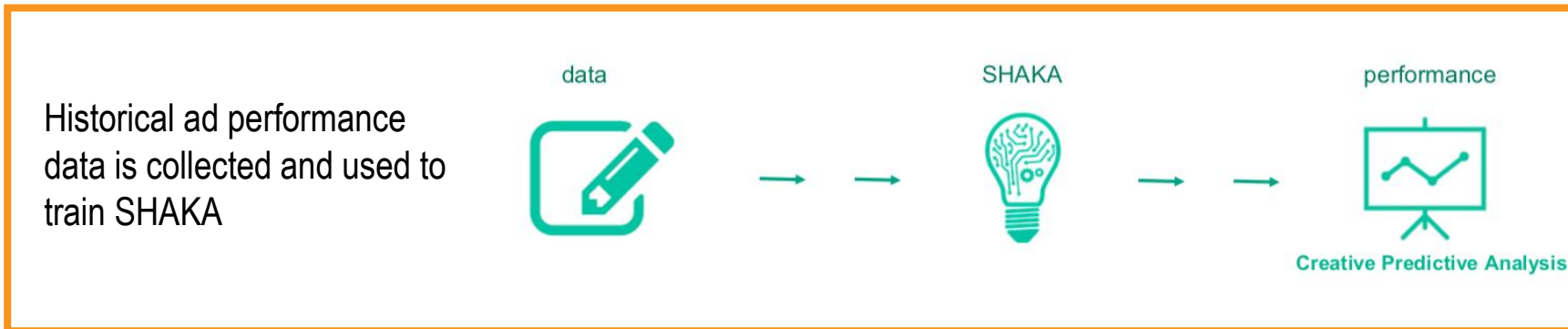
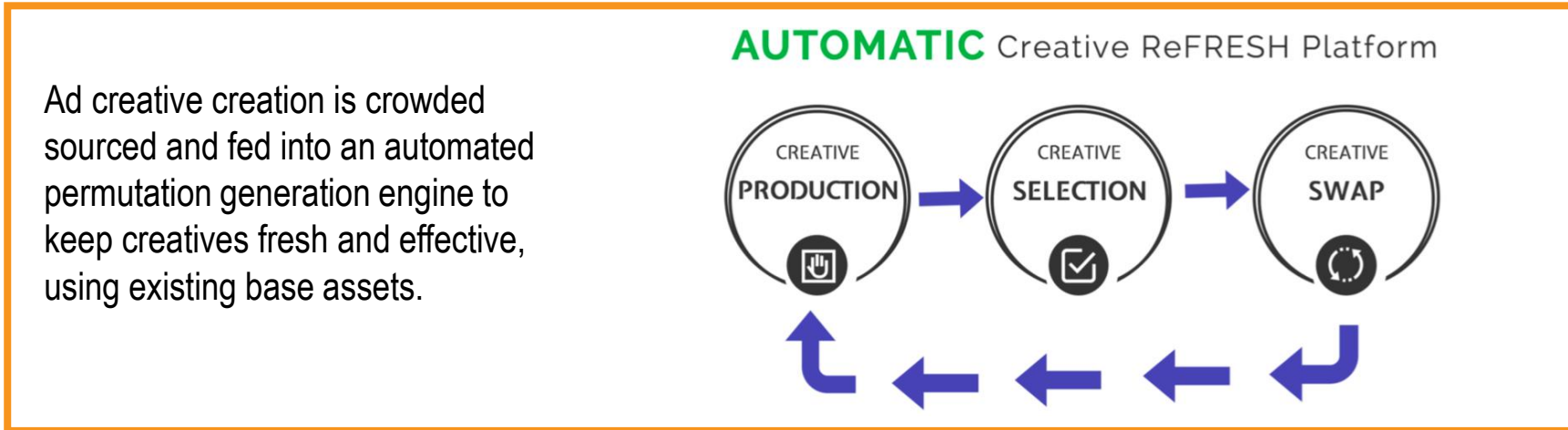
Fundamentally these two things must be supported by the same underlying platform as the core streams that feed both use cases are the same.


Use cases

- Event-driven microservices
- Fraud detection
- Machine learning applications
- Real-time data pipelines and integration
- Customer 360 and other customer-experience oriented initiatives
- Real-time risk platforms
- Trade management platforms
- IoT
- Real-time logistics platforms
- Cloud migration

Creadits SHAKA is a hybrid platform that include a crowd sourcing creative design platform, an automated creative generation platform, a campaign management platform, and a proprietary campaign optimisation engine

SHAKA Product Features

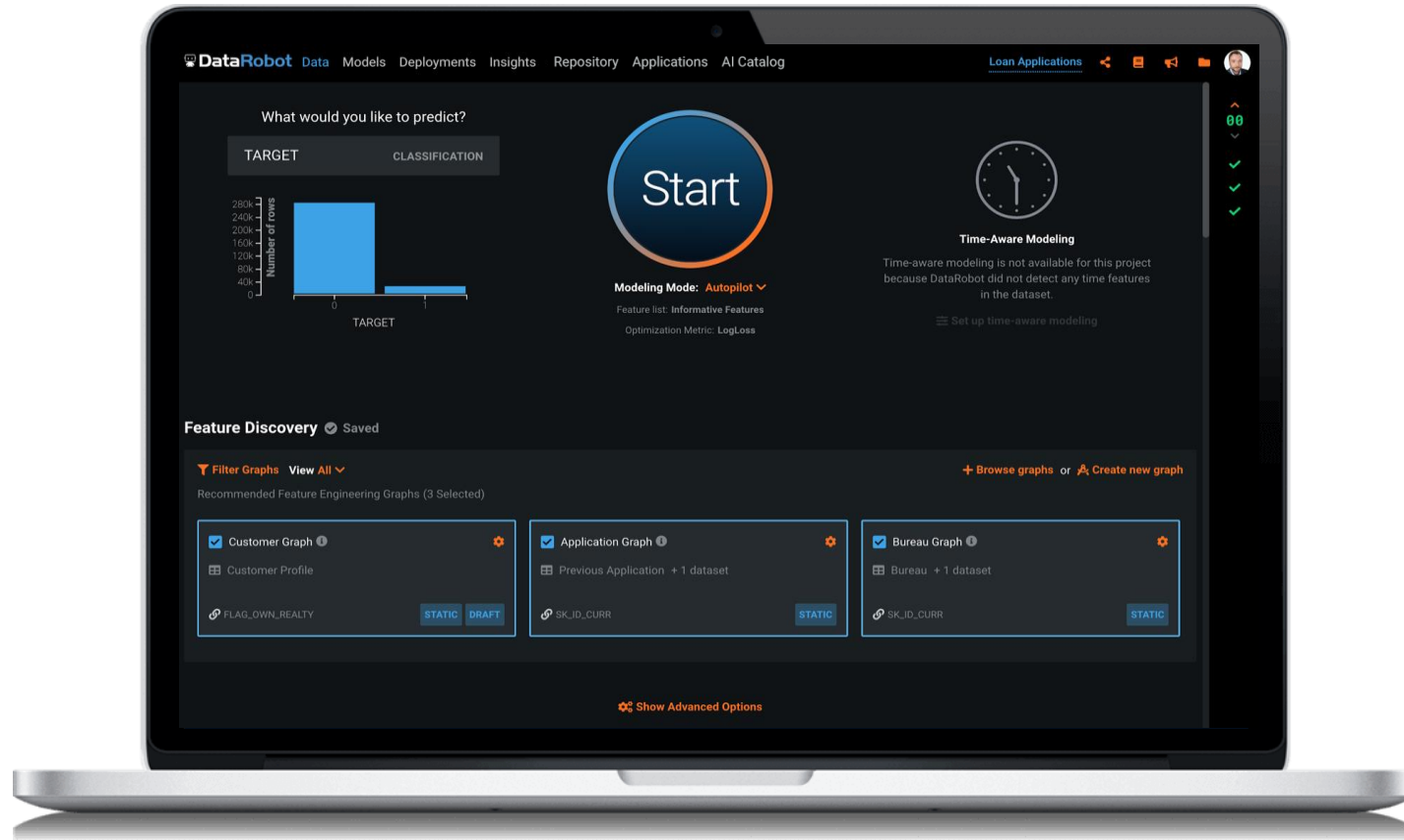


 MEDIA TECH

Creadits proprietary machine learning algorithms (SHAKA) measures how well advertisements perform against the targeted viewers from a list of 48 features and trained over more than 1 billion advertisements.

This insight is then used to predict how well advertisement creatives will perform against their clients' targeted customers, thereby increasing return on advertisement spend and conversion rate.

The **DataRobot Enterprise AI Platform** democratizes data science and automates the end-to-end process for building, deploying, and maintaining AI at scale. Powered by the latest open-source algorithms and available in the cloud, on-premise, or as a fully-managed AI service, DataRobot gives you the power of AI to drive better business outcomes.



MACHINE LEARNING PLATFORM

Four independent but fully integrated products

Each can be deployed in multiple ways to match your business needs and IT requirements

DataRobot Paxata Data Preparation

Visually and interactively explore, combine, and shape diverse datasets into data ready for machine learning and AI applications at enterprise scale

DataRobot Automated Machine Learning

Automate and democratize the creation of advanced machine learning models that incorporate our world-class data science expertise

DataRobot Automated Time Series

Automate the development of sophisticated time series models that predict the future values of a data series based on its history and trend

DataRobot Machine Learning Operations

One place to deploy, maintain, and govern all your production models, regardless of how they were created and where they are deployed

DataRobot Paxata Data Preparation is a powerful self-service tool to visually and interactively explore, combine, and shape diverse datasets into data, ready for machine learning and AI applications at enterprise scale

DATA PREPARATION PLATFORM

Visually Interactive

Intuitive GUI that empowers anyone prepare and consume data for machine learning projects

AI-Assisted

Intelligently parse and ingest complex data structures. Performs automatic join detection with exact or fuzzy matches. Automated cleansing and standardization

Cloud Scale

Powered by Apache Spark™ to scale to data volumes beyond samples on an elastic, multi-cloud architecture

Robust Data Governance

Recorded data prep audit trail and easy data lineage tracking for explainable AI. Fine grained data security

Collaborative

Multi-user project development, annotations, and tagging allow for easy sharing and collaboration on data preparation tasks



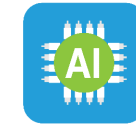
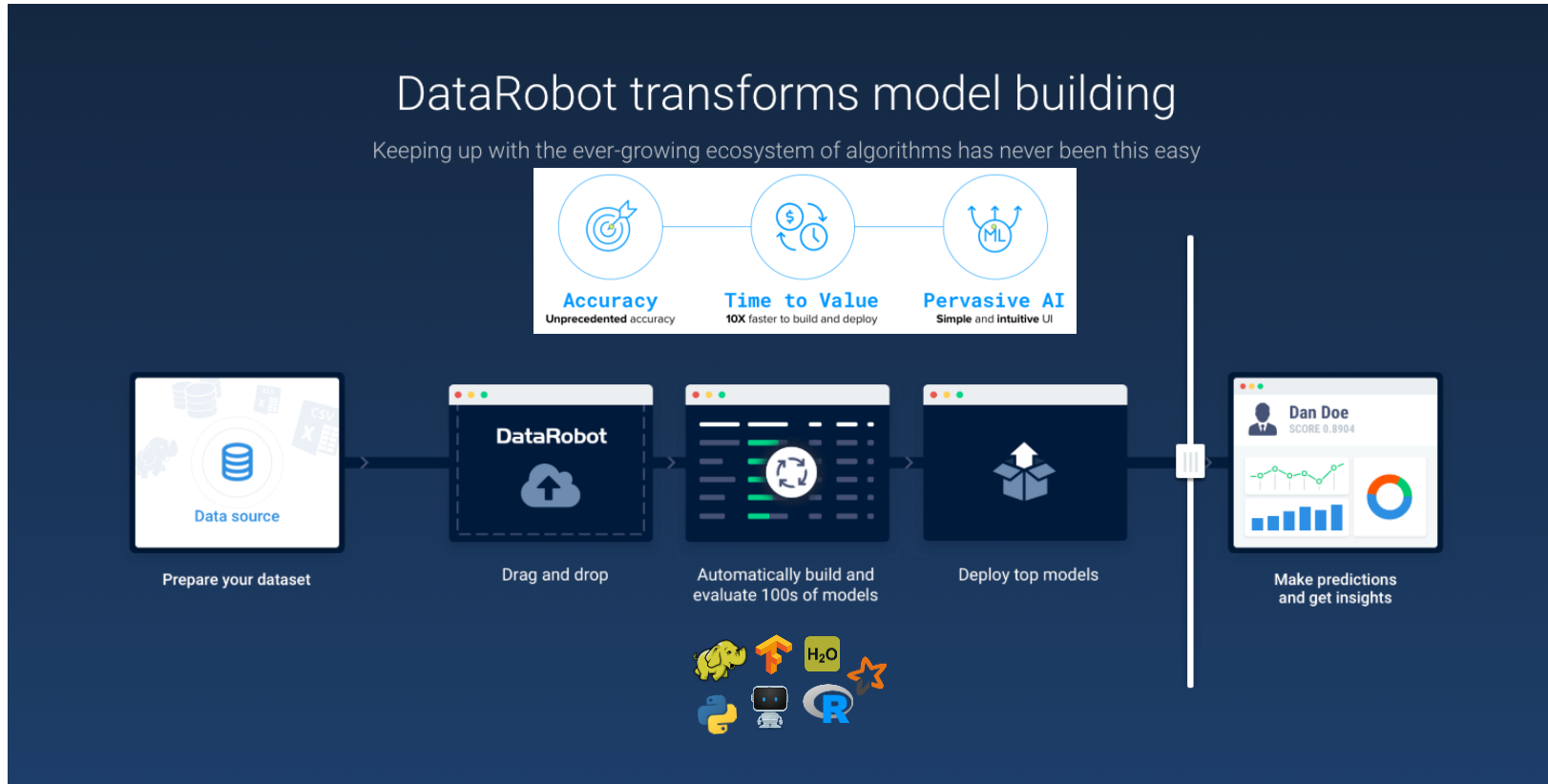
DataRobot is the world's most advanced machine learning automation platform, capturing the knowledge and best practices of the world's leading data scientists and delivering unmatched levels of automation and ease-of-use for machine learning initiatives.



SG:D
ACCREDITED

DATAROBOT MACHINE LEARNING AUTOMATION PLATFORM

PRODUCT FEATURES



MACHINE LEARNING
PLATFORM

DataRobot enables Enterprises to build a competitive advantage with AI.

- **Automation** which allows data scientist teams to scale and be more productive
- **Ease of use** for non-data scientist. It allows them to confidently build models that are just good or better than models built manually, that will stand up to the quality and scrutiny of experienced data scientists



PRODUCT FEATURES

Dathena Freemium



Free to use, no hidden cost

User Risk Assessment & Smart License Management

- ✓ Automatically and accurately map users based on access to sensitive data
- ✓ Automatically recommend best allocation of data protection licenses & add-ons allocation based on optimal risk coverage and lowest license cost
- ✓ Quickly evaluate your total license fee cost savings with our application

Dathena Security



Free Trial + Subscription

Augmented Data Protection

- ✓ Automatic and accurate identification of sensitive and business critical data
- ✓ Automatic generation Data Protection Policies, prioritized based on data breach risk
- ✓ Easily orchestrate enforcement of Data Protection Policies

Monitor and Restrict File Sharing

- ✓ Automatically identify all files shared with third-parties via collaborative tools for sensitive data
- ✓ Dynamic dashboard displaying sensitive files shared with external users
- ✓ Receive timely alerts on risky file sharing
- ✓ Revoke access to these files from unauthorized third-parties



W <https://www.dathena.io/>

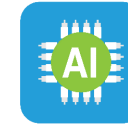
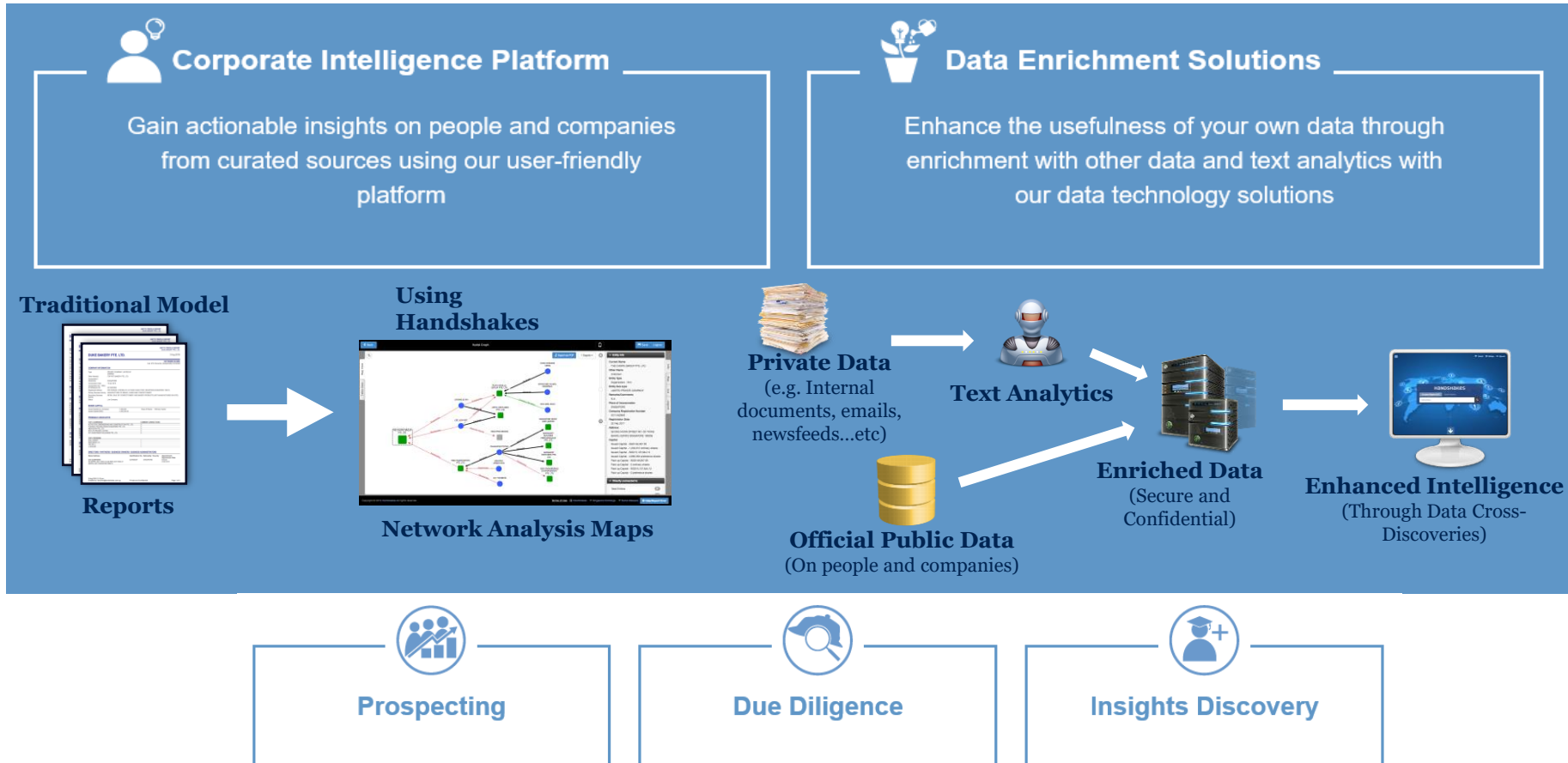
CATEGORY
Data Security & Privacy

End Data Breaches & Save Cost

Dathena's Groundbreaking A.I. Technology with 7 patents and counting unlocks the potential of your DevSec Operations with:

1. Full and accurate visibility of sensitive data and users and risk
2. Boosting your DLP & CASB, by enforcing highly efficient data protection policies in minutes
3. Enable collaboration and protect sensitive files, stress free

DC Frontiers was founded in 2011 with the objective of enriching the value of data in the marketplace. It seeks to create new value through the study of people and company connections, and the mutual enrichment of public and private data. **DC Frontiers** is an associated company of the Singapore Press Holdings.



COMPLIANCE TECH /
RISK MANAGEMENT

Handshakes is a software-as-a-service platform that allows users to understand complex corporate relationships.

Curated from official sources, users can generate interactive network maps and live reports of people and companies within seconds.

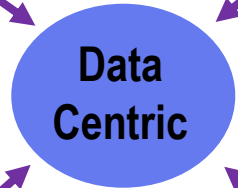
Current clients leverage Handshakes for due-diligence, regulatory enforcement, investigation and lead generation.

EverComm helps organization and/or governments to **identify, achieve and scale** best practices effectively through **optimizing** available technologies. They provide IoT/AI driven **asset performance management** solutions for industrial/commercial buildings, manufacturing factories and renewable energy farms.



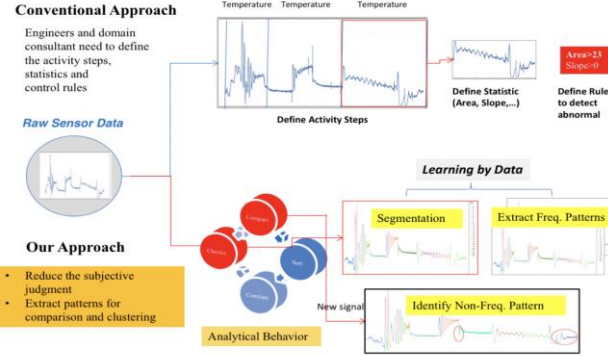
Energy IoT

Minimize the Time, Cost & Complex System Integration



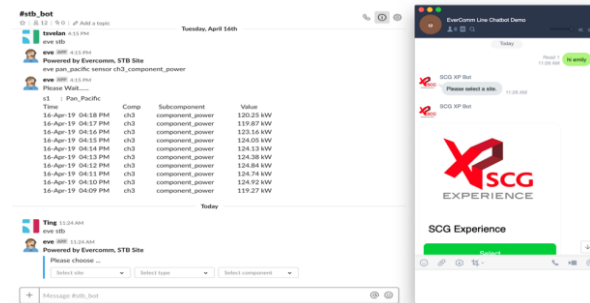
Equipment Level Analytics

Analyzing thousands of sensors & equipment real-time data at equipment level



AI-driven Digital Energy Assistant

On-demand Data Request & Active Equipment Performance Alert



Asset Performance

Benchmarking & Equipment Indexing



ENERGY MANAGEMENT



AI-Driven Asset Performance Optimization



On-Site Productivity Improvement



OPEX Optimization



CAPEX Optimization

H2O.ai, the open-source leader in artificial intelligence and machine learning, offers an end-to-end platform that democratizes AI, enabling every employee, customer, and citizen with sophisticated AI technology and easy-to-use AI applications.

Put AI Applications in the Hands of Business Users: an open-source lightweight Python development framework that makes it easy for developers, data scientists, and machine learning engineers to make sophisticated AI applications. These AI applications can be rapidly deployed and hosted in an AppStore for business users to consume.

Responsible AI the Business Trusts: over a dozen analyses to help organizations validate models, remove bias, and interpret the results. The user interface provides sophisticated visuals to help customers explore the results. Additionally, H2O automatically generates detailed and shareable insights about the trained model.

Rapidly Make World-Class AI Models and Apps: automation capabilities in every step of the data science lifecycle including data visualization, feature engineering, algorithm selection and hyper-parameter tuning. Our AutoML was designed and built by Kaggle Grandmasters, the top data scientists in the world, enabling both novices and experts to rapidly make highly accurate and robust models. H2O's AutoML supports tabular, time series, text, audio, image, and video data from one platform.

Connect Anything, Deploy Anywhere: an open platform, deployed with Kubernetes that allows customers to run in any cloud or on-premises infrastructure. Models deployed with the platform run anywhere, including virtual machines and IOT devices. We provide over 200 data connectors, over 180 open-source Python scripts, and allow customers to use their own libraries, custom algorithms, model transformers, measures, and scorers of choice.

Run Fast and Scale Out: rapidly and efficiently trains models on both purpose-built and commodity hardware. We provide highly optimized processing for both CPUs and GPUs and distributed processing for terabyte-sized datasets. Additionally, H2O models (MOJOs) produce scores with sub-millisecond latency.



We see 6 stages in a successful AI project and all these are encapsulated in H2O AI Hybrid Cloud.

Prepare: Full suite of data preparation, data engineering, data labelling, and automatic feature engineering tools to accelerate time to insight.

Model: Award-winning Automatic Machine Learning (AutoML) technology to solve the most challenging problems, including Computer Vision, Time Series and Natural Language Processing.

Explain: Industry-leading toolkit of explainable and responsible AI methods to combat bias and increase transparency into machine learning models.

Operate: Deploy models in any environment and enable drift detection, automatic retraining, custom alerts, and real-time monitoring.

Develop: Fast development of AI applications through an open-source, light-weight Python development framework.

Consume: Data science teams can quickly share their applications with team members and business users, encouraging company-wide adoption.

H₂O.ai

SG:D
ACCREDITED



MACHINE LEARNING
PLATFORM

Some of the common use cases include:

- *Anomaly detection*
- *Anti Money Laundering*
- *Clinical Workflow*
- *Credit Scoring*
- *Fraud detection*
- *Marketing Personalization*
- *Predictive Maintenance*
- *Computer Vision*

IMPRESS.AI - INTELLIGENT CHATBOTS FOR RECRUITMENT



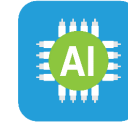
AI-powered candidate engagement, screening, interviewing and shortlisting platform to make hiring **seamless, scientific, and unbiased**.

Key features include:

- Natural Language Understanding & Text Analysis
- Employer Branding
- Intelligent resume parsing and analysis
- Automated shortlisting and rejection capability
- Automated assessment of behavioural competencies
- Technical assessment capability
- Intelligent candidate query response module
- Detailed analytics and reporting capabilities

Benefits you can gain include:

1. **Productivity** (Reduced time-to-shortlist, time-to-hire, cost-of-hire)
2. **Automation** (Multiple interview stages, seamless 3rd-party integrations, shortlist/reject criteria, candidate querying & response)
3. **Experience** (Improved candidate feedback, faster candidate review, lower drop-off)



HR TECH

Unique Value Proposition

*We provide you with the ability to **engage** every job applicant, **brand** your organisation, and conduct a **structured assessment** of their skills and capabilities - in the shortest time possible and without any bias.*

- *Impress works 24x7*
- *Impress is structured*
- *Impress is not biased*
- *Impress is engaging*

JobKred provides technologies to empower individuals and organisations to thrive in the new digital economy. Using Big Data and Artificial Intelligence, JobKred decodes the inter-dependent relationships among industries, careers, jobs and skills to enable effective interventions in workforce development and talent growth.



Develop your Organisation Skills DNA profile



Empower employees to self-help and become self-directed



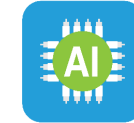
Access Big Data analytics to do global benchmarking



Map the skill roadmap that leads to your business goals

Benefits of JobKred's SPRE –

- Identify critical skills and job roles lacking in your organization to support **transformation** plan
- Customize a skills framework that is unique to your organization to **future-proof** your employees
- Identify your organisation's Skills DNA profile so you can **manage** and **grow** your talent pool
- Act as self-serve digital career guidance system to help employees perform skills gap analysis, personalize **individual** learning plans and skills development



HR TECH

The traditional way of manually identifying individual skill gaps and creating personalized learning plans for employees is expensive, time-consuming and not scalable.

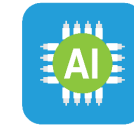
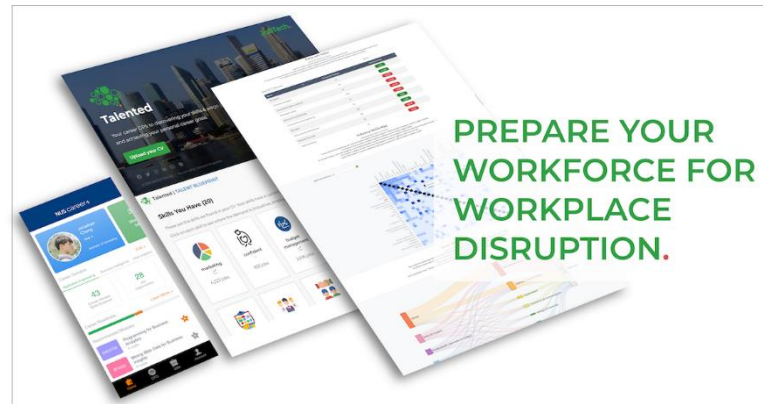
SPRE is an AI-powered human capital development platform that offers a scalable and cost-effective solution.

PRODUCT FEATURES

JobTech is an online talent development platform that helps individuals and organizations develop the relevant skills to keep pace with the changing needs of the job market.

The JobTech talent development model is called Talented – an agile enterprise learning model comprising 3 distinct qualities:

1. **Personalized** learning journeys that empower the individual to define his/her career path.
2. **Informed** staffing and development actions based on organizational skills stock, strengths and gaps.
3. **Collaborative** and experience-based learning that supports day-to-day work and projects.



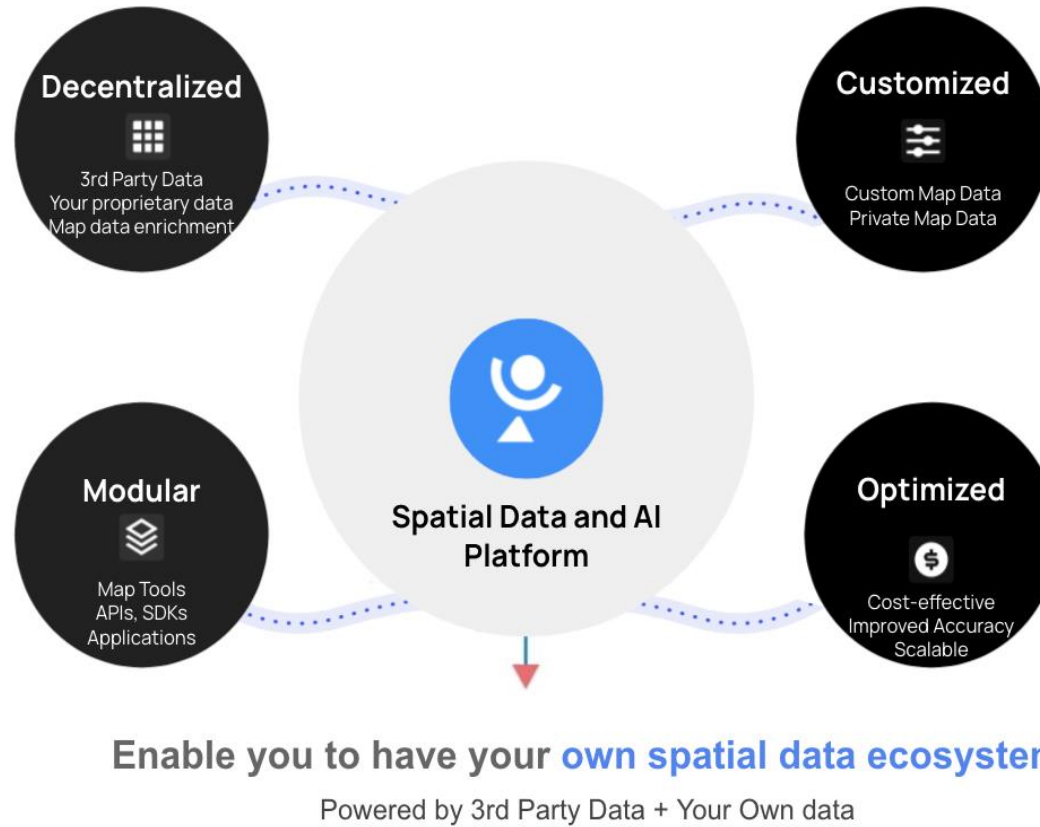
HR TECH

National University of Singapore students and alumni use JobTech's talent development platform named NUS career+ to analyse their skills and identify relevant training courses to help them achieve their desired career paths.

SkillsFuture Singapore uses JobTech's talent development platform to keep stock of their employees' skills and competencies. Through the platform, the HR team is able to assess skills gaps and strengths at the organizational and divisional level.

NextBillion.ai is a **spatial data + AI** platform that helps enterprises manage location data and adopt an AI-first approach at scale for every use case and geography.

- Better accuracy than Google / Mapbox
- 10X more cost-effective solutions
- 20x more scalable APIs
- Support for on-prem deployment
- Customized map data
- Map solutions for all vehicle types



DEV MAP DATA-AS-A-SERVICE (MDAAS)

- *Map Data Management service that can edit, enrich and customize data — from third party open data sources, to each customers' proprietary user data (e.g., GPS, imagery)*
- *Customizable and scalable APIs (e.g., Distance Matrix, Navigation, Snap-to-Road, Geocoding, Search), and SDKs (e.g., Maps and Navigation)*
- *Tailored data tools like Mergical, Map Building, AI Labeling and Road Restriction to enable unique use cases*

Parcel Perform aims to solve all inbound and outbound logistics and shipment tracking challenges for government agencies and businesses to create a better experience for all stakeholders. At the core of our offering stands a powerful logistics data standardization and interpretation engine which removes the burden of integrations with separate carriers.

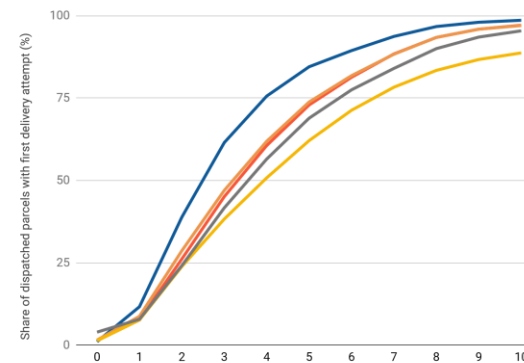
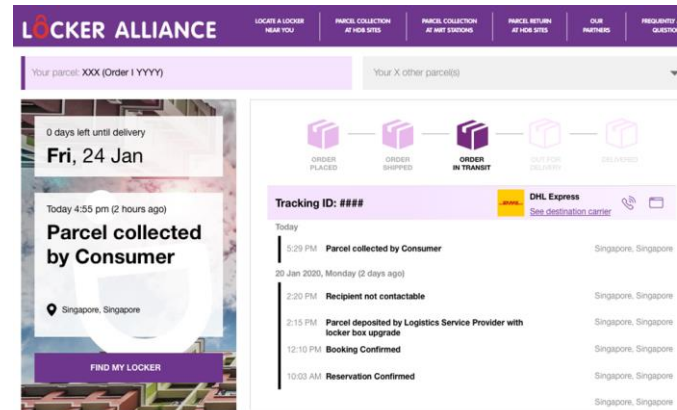
PRODUCT FEATURES

Logistics data management platform:

With the carriers' tracking number, Parcel Perform obtains, standardizes and interprets tracking data and continuously re-evaluates delivery time estimates. This can be used to trigger notifications to colleagues, the recipients or your systems. 600+ carriers are covered globally, across all types of shipments (e.g., parcels, pallets, ULDs, TEUs).

User-facing functionality:

- **Shipment tracking page & notifications** - Branded site and e-mail / SMS notifications on updates across carriers
- **Real-time shipment overview** - Status overview over all shipments with options to escalate issues
- **Logistics Intelligence** - Carrier performance visibility, reporting and performance alerts
- **Machine learning / AI predictions** - Delivery time prediction engine



LOGISTIC TECH


BENEFITS FOR USERS


- For agencies with inbound / outbound shipments:** Real time visibility on logistics performance, branded tracking page & notifications, analytics and inquiry servicing tools.
- For NTP and trade authorities:** Enable NTP to have shipment visibility prior to their arrival as well as predict ETAs of cargo.
- For IMDA & SG:D initiatives:** Support digitization of supply chains for SG businesses, by standardizing shipment data & integrating with ERP systems.


SparkBeyond ... the AI powered problem solving platform



SparkBeyond's technology was built to make **deep discoveries in data** – to identify root-causes and help solve the most challenging **business and social problems**.

 **An Ideation Machine**
Millions of ideas are generated as the machine analyses complex patterns in data, bypassing the cognitive bottleneck and bias inherent in human thinking

 **Adapting to a Dynamic World**
The platform adapts to changing conditions and discovers new insights as the world around us evolves

 **Building Capabilities**
Empower clients with tools to make their own discoveries, and solve ongoing business use-cases independently

Strategic partnerships with leading professional services and technology companies support **end-to-end solutions**.

FINANCIAL SERVICES

SparkBeyond created over 170 drivers that were able to **capture 86% of the fraudulent cases within the top 15% ranked cases** for a global services company investigating fraudulent credit card payments.

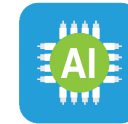
MEDIA & TELECOM

Major US telco was suffering from churn and exhausted traditional analysis methods. SparkBeyond **generated \$100m in impact** by identifying over 20 new churn drivers, covering 80% of churners.

PUBLIC SECTOR

Supported a government agency with its tax audit process, identifying ~100 predictors of tax fraud/error. Developed predictive model to capture an estimated **\$0.5b in additional audit revenue**.

We have **partnered with clients** across 20+ sectors in order to create more than **\$1 billion in impact**.



MACHINE LEARNING PLATFORM

Use Case

Business Problem: large retailer was expanding 2,000+ stores, but had not achieved target profitability on stores opened to-date

Business Use-case: Identify specific geospatial locations in order to maximize profitability

Business Impact: identified optimal store locations, based on 100+ profitability drivers (including novel drivers such as proximity to laundromat)



PRODUCT OVERVIEW

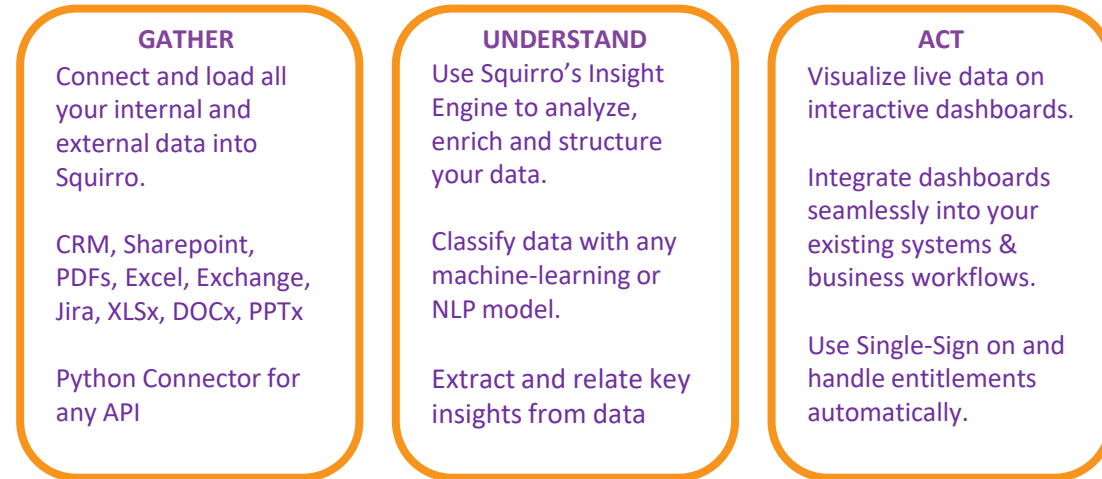
Value Proposition

Squirro marries data from any source with your intent and your context to intelligently augment decision-making - right when you need it!

Every organization benefits from our scalable Insight Engine to unsilo, connect, and synthesize all data types and generate highly valuable information.

All of this creates a seamless and bespoke insights experience that helps everyone in the organization save time.

- Use on our our out-of-the-box AI solutions with pre-trained models!
- Build your own AI solution with our Insight Engine tailored to your use case



COGNITIVE SEARCH

Cognitive Search is the next generation of enterprise search, using augmented intelligence (AI) to return results that are more relevant to the user. Squirro Cognitive Search allows the users to search across multiple data sources. [Learn more!](#)

INSIGHT ENGINE

The Squirro Insight Engine augments search technology with Augmented Intelligence to deliver relevant and context-aware insights. It applies relevancy methods to describe, discover, organize and analyze data. [Learn more!](#)

AI STUDIO

The AI Studio is a no-code interface for business analysts and data analysts to rapidly develop machine-learning models by labelling training data, creating NLP models and validating them on testing data. [Learn More!](#)

Tookitaki's Alert Management Suite (AMS), a Third Generation anti-money laundering (AML) solution, reduces false alerts generated by rule-based and watchlist-reliant AML software, and maintains accuracy of its predictive models. Machine learning-driven AMS detects known and unknown suspicious cases, and provides alert prioritisation and explanations to facilitate investigation, and regulatory reporting.



Tookitaki Alert Management Suite

Manage AML alerts across
Transaction Monitoring and Name Screening

Most AML management solutions do not adapt to environmental and underlying data changes

Tookitaki AMS uses **machine learning** to predict AML alerts

A
Alert Management Suite

AI-driven detection of high risk transactions / true positives

Applicable to multiple core bank BAUs

AMS is able to **evolve** and detect new AML patterns

AMS **explains** suspicious patterns, and alert predictions, to facilitate investigations, audits, and regulatory compliance

Keep evolving with changing datasets, thereby maintaining **high accuracy**

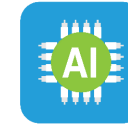
Tookitaki Improved Process

30% reduction in false alerts

90% reduction in alert investigation time

New rule generation with supporting analysis

Auto detection of new risky activity patterns

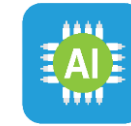
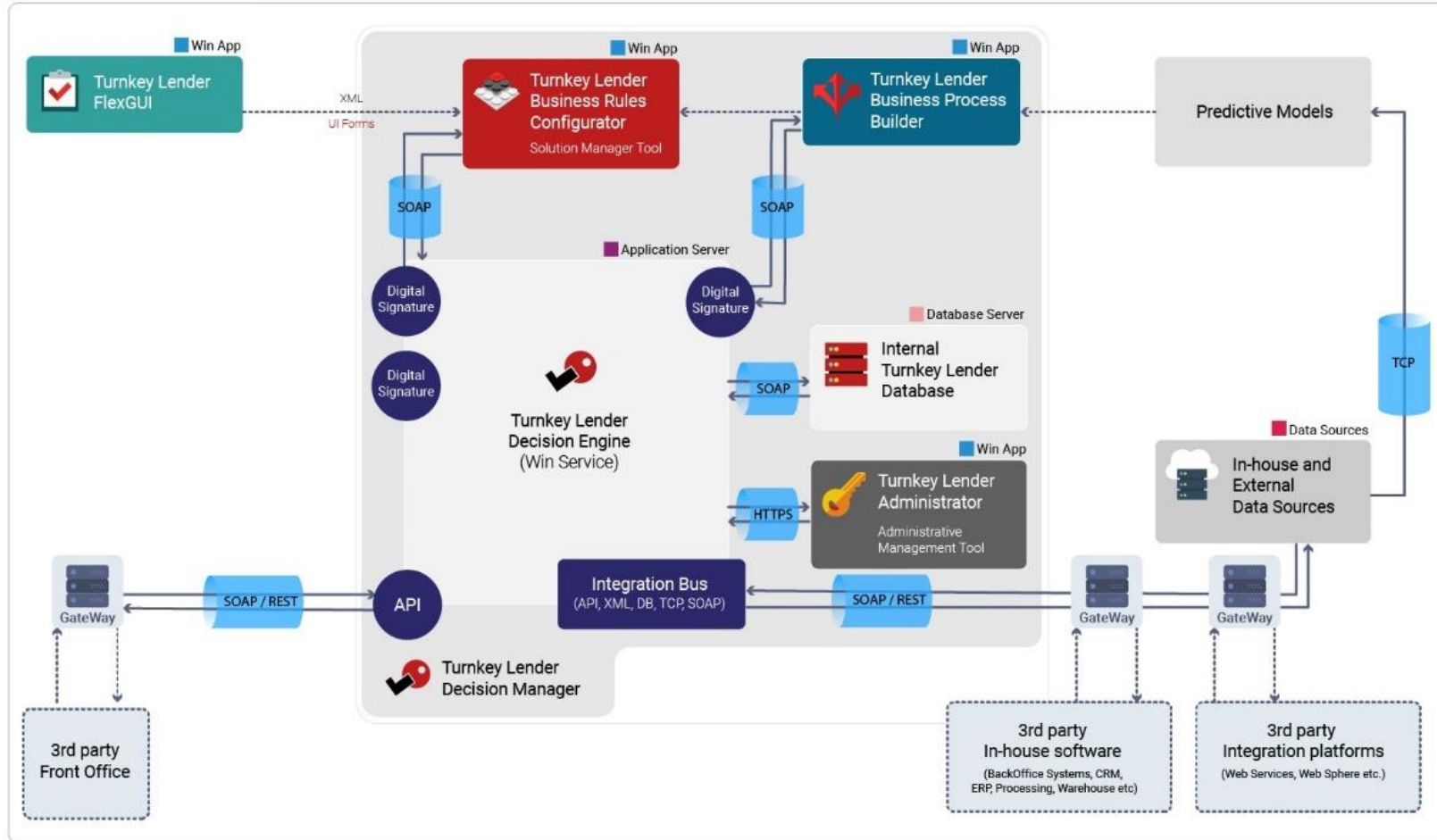


COMPLIANCE TECH / RISK MANAGEMENT

Compliance teams currently spend massive amounts of time on false positives.

The benefit of machine learning technology is that it can recognise patterns in order to discard false positives and focus on genuine risks.

Turnkey Lender is a flexible and configurable automation platform for **grant application processing, automated decisioning, KYC checks, risk mitigation and process management**. This highly sensible **AI-driven** solution has allowed its clients to increase efficiency, reduce costs, focus on value added services and gain an imbalanced competitive edge.



**BUSINESS PROCESS
AUTOMATION**

***Digitally** process all grant applications or any other type of application*

***Automate** the selection or pre-qualification process by implementing configurable decision making rules*

***Improve** productivity as 10X more applications can be processed*

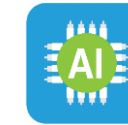
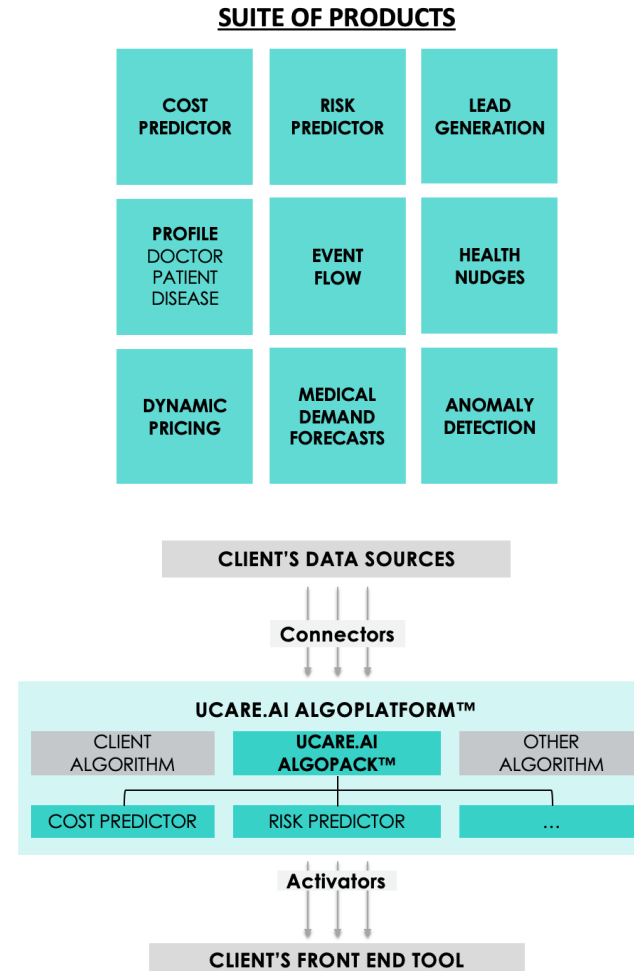
***Automated** reminders for applicants and internal staff*

PRODUCT FEATURES

UCARE.AI a technology enabler using online ML and AI to predict health insights multiple years ahead for insurers, governments, pharma, payers and providers to

- i. better manage and price risk of individuals
- ii. procure medical procedures / services
- iii. generate new revenue streams

Our implementation blueprint (comprising of AlgoPlatform and AlgoPacks) to unlock client's treasure trove of big data offers a flexible architecture, low cost and quick solution.



HEALTHCARE AI

COST PREDICTOR

AI models to predict patients' bill size accurately and dynamically on a real time basis, allowing our clients to understand their patients' true cost.

- UCARE.AI's model reduces underestimation by 8x and absolute error by 4x
- Predictions have a 2x stronger relationship with actual bill size

RISK PREDICTOR

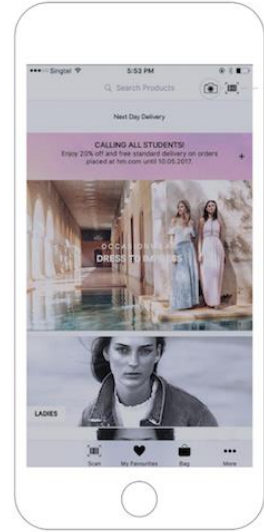
Predicting the risk of hospitalisation in the next 6 to 12 months using historical data for prioritise active intervention and case management of high risk individuals

- Accuracy of 85% based on blind-test graded by our client

ViSenze is an Artificial Intelligence company that makes search by images without keywords. Built on 100% deep learning & computer vision, **ViSenze's** solutions understand content in images & videos to solve real-world search problems.

ViSenze Solutions

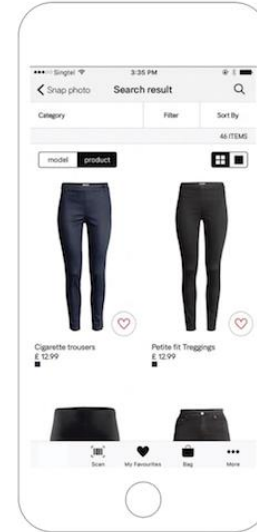
- Visual Search
- Automated Tagging
- In-video Recognition
- Visually Similar Recommendations
- Visual Commerce Platform
- Visual Content Monetization



1 Camera button to click or upload an image



2 User uploads image containing the product



3 Image analyzed and visually similar items shown as search results



Accurate



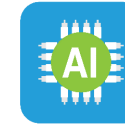
Scalable



Low latency



Reliable



COMPUTER VISION

Retailers use ViSenze to convert images into immediate product search opportunities, improving conversion rates.

Media companies use ViSenze to turn any image or video into an engagement opportunity, driving more new and incremental dollars.

WalkMe is the pioneer of the **Digital Adoption Platform (DAP)** — an enterprise-class guidance, engagement, insights and automation platform. WalkMe's holistic approach to digital adoption simplifies any organization's digital assets for the overwhelmed user.



Insights

Gain visibility into the user journey to find out where your users struggle, what features are underutilized, and where inefficiencies exist.

Guidance

With strategically placed content delivered at the moment of need, users can complete complex processes without prior experience.

Engagement

Powered by AI and contextual awareness, the DAP increases engagement by anticipating user needs and providing personalized guidance.

Automation

Simplify the user experience by eliminating empty clicks and automating mundane tasks. With intelligent automation, you will raise user engagement and send productivity soaring.

WalkMe's Layered Approach to Adoption



DIGITAL ADOPTION
PLATFORM

- *Drive product adoption and engagement*
- *Realize the full value of your digital assets*
- *Track and analyze obstacles to improve customer experience*
- *Accelerate time-to-competency during onboarding*
- *Simplify user experience to reduce resistance to change*
- *Ensure data validation and integrity*

PRODUCT FEATURES

We help our **enterprise** clients engage with their **customers** at scale with our human-like voice AI (WIZ Talkbot) and provide companies with rich customer data through WIZ A.I.'s client portal, which automatically records and categorizes customer intention from unstructured call data.

This comprehensive depth of data allows companies to identify high value customers, create a more comprehensive customer persona and uncover any gaps in their customer experience easier.

CLIENTELE



Banks



Insurers



Healthcare



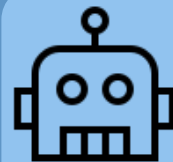
Telco



E-commerce



I can't make it tomorrow



Ok, thanks for letting me know. Our next available slot is next Monday the 23rd at 4pm. Shall we reschedule?

Customer Outreach

- *Tele-sales/ Lead Gen*
- *Auto Re-Contract*
- *Customer Service Training*

Customer Care

- *Customer Support*
- *Client Servicing*
- *Courtesy Reminder*

Customer Retention

- *Verification*
- *Client Onboarding*
- *Interactive feedback*

Xjera Labs focuses on developing Artificial Intelligence based image and video analytics solutions for various commercial applications with high accuracy and reliability when benchmarked against market providers. **Xjera Lab's** solutions are equipment agnostic (ease of integration) and can be trained to apply across a wide breadth of verticals.

Athena Product Features



XIntelligence

People Counting
Attributes Detection
Facial Expression
Event Detection for People & Vehicles



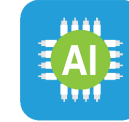
XHound

People of Interest Tracking
Face Recognition
Vehicle of Interest Tracking
Face Verification



XTransport

Vehicle Counting & Classification
License Plate Recognition
Access Control
Intelligent Traffic Management

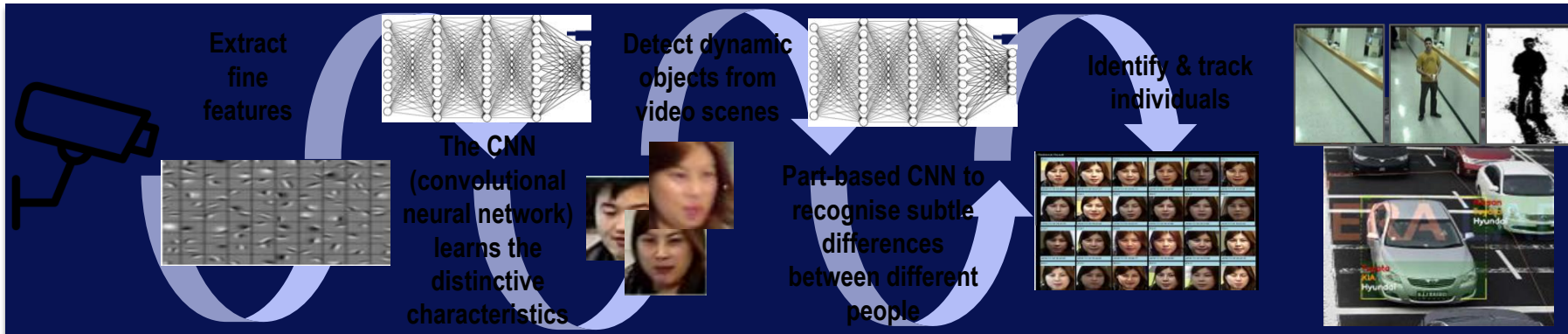


COMPUTER VISION

Computer Vision + Deep Learning

*Xjera with deep learning technology, trained its product to mimic human vision to **detect, recognize and classify** under uncontrolled environment.*

Objects are distinguish based on fine characteristics, eg. Silver Toyota instead moving car; OR workers with safety harness instead of workers within safety perimeters.

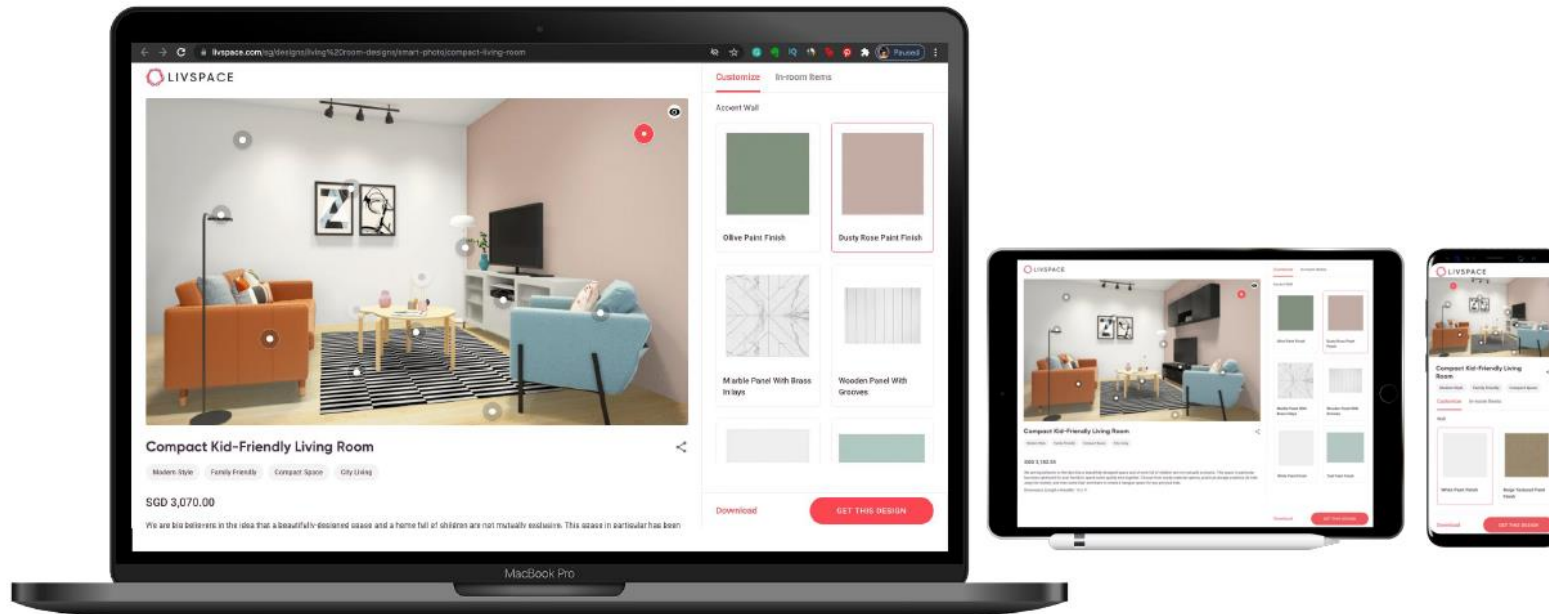




**Enterprise Data /
Dev Platform**

Livspace is an EDBI-invested company that aims to uberise and drive digital transformation of the interior design and renovation industry.

Founded in Singapore in 2014, Livspace offers a ML-based design-to-installation Canvas platform that connects homeowners/businesses to designers/suppliers. This enables faster delivery of designs and transparency in managing the last mile delivery & installation of home furnishings from suppliers. The platform has sold over 7.5 million SKUs and completed over 100,000 rooms in its markets India and Singapore.



One-click editing

Change products and materials to visualize your space

Photorealistic output

Advanced 3D output with realistic textures, shadows and more

Packed with features

Download, share, cost breakup, lead form and more

Fully customizable for partners

Custom layouts, product catalog, styles, camera angles, CTAs, etc.

Comprehensive catalog support

Support for products and installation services across categories. Multi-brand marketplace with pricing support for all SKUs.

Photorealistic materials

Multiple shine, opacity, reflection, texture and tiling settings. SKU-level definition of start and end points for material application.

Layouts library

Create your own library of floor plans and layouts. Each SmartPhoto is mapped to a layout.



ML

SmartPhotos

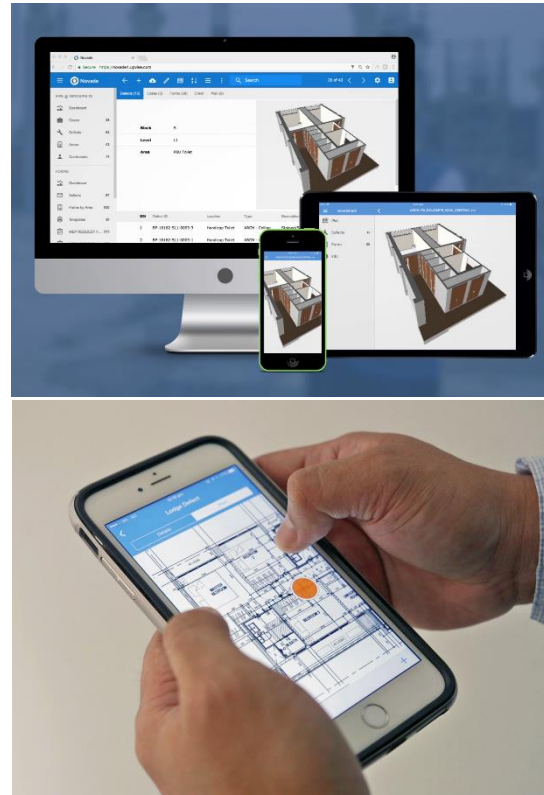
- an interactive photo format that enables visualization and personalization of spaces.
- can be used for both digital and omnichannel applications
- This proprietary format is proven to drive high engagement and high conversion.
 - 9X engagement compared with industry average for average time on page
 - 2X conversions compared with industry average for landing page conversion rate
- come with both built-in and optional add-on features, giving you the flexibility to tailor the experience for your users.
- Support a wide range of catalogue and visualization capabilities

THE NOVADE PLATFORM

Novade drives the digital transformation of the **building and construction** industry.

Trusted by major contractors, real estate developers, and engineering service providers, Novade's platform is utilized to empower users in the field and automate processes on-site.

The data captured provides valuable insights to streamline operations. The platform includes modules to manage Quality, Safety, Activity, Workforce, Logistics and Maintenance on site.



DRIVE YOUR DIGITAL TRANSFORMATION

With Novade, process digitization is more than just a substantial boost to productivity, our services allow clients a unique opportunity to gain insight and analytics into operations.

This insight is extremely valuable for companies in the pursuit of continuous improvement while minimizing risk in a competitive industry.



Organizations worldwide rely on the Privitar Data Privacy Platform to protect their customers' sensitive personal data and to deliver comprehensive data privacy that frees them to extract the maximum value from the data they collect, manage and use.

Founded in 2014, Privitar is privately owned having raised \$60M of capital from Accel, 24 Haymarket, Illuminate Financial, IQ Capital, Partech and Salesforce Ventures. Our worldwide headquarters are in London. US headquarters are in Boston. Privitar supports customers worldwide with regional offices throughout the US, Europe and Asia.

PRODUCT FEATURES

Privitar enables enterprises to accelerate safe data provisioning by defining, managing and systematically applying consistent **data privacy policies** across data locations and environments, whether streaming, batch or on-demand. Policies can incorporate a combination of any of the full range of privacy methods based on the context – who will be using what data for what purpose.

Accordingly, Publisher creates a Protected Data Domain,[™] which is a use case specific dataset that has the added benefits of:

- Enforcing business policies for data distribution, access and expiration by tagging with immutable metadata.
- Controlling data linkability to optimize utility and minimize re-identification risk
- Deterring insider threats and facilitating forensic investigations via undetectable watermarks that describe data provenance.



PRIVACY ENHANCING TECHNOLOGIES

With Privitar's powerful data privacy software, businesses can safely use data to gain valuable insights that support data-driven decisions over intuition to innovate, identify market opportunities, accelerate time to market, acquire and retain customers, improve customer experience, and identify inefficiencies that ultimately grow revenues, reduce costs and increase profitability.

Puppet is driving the movement to a world of unconstrained software change. Its industry-standard platform automates delivery and operation of the software that powers everything around us. More than 40,000 companies — including more than 75 percent of the Fortune 100 — use Puppet to achieve situational awareness and confidently drive software changes. Learn more at puppet.com. Also look through the [Puppet Forge](https://puppet.com/puppetforge) for 6000+ prewritten, pretested modules that will help you get started.

Continuous Delivery for Puppet Enterprise

Puppet Enterprise combines **remote agentless** capabilities with robust agent-based solutions to give customers the advantage of **automating** anything, anywhere while extending changes across their infrastructure, at scale.

Puppet Enterprise helps improve organizational **productivity**, go-to-market **agility** and **collaboration** across teams while reducing tool proliferation. Additionally, Puppet Enterprise gives IT teams a common language to successfully adopt [DevOps](#) practices, such as version control, code review, automated testing, continuous integration and automated deployment.

Continuous delivery isn't just for your application code. With Continuous Delivery for Puppet Enterprise, Ops teams can now use the same workflows their Dev teams use to build, test and promote their infrastructure code. It makes continuous delivery simple for infrastructure managed with Puppet Enterprise, from the time you commit Puppet code to the deployment of that code across your environments. Get **full control** and **visibility** over how your infrastructure code is tested and promoted so you can deliver changes faster and with more confidence.



DEV OPS AUTOMATION

- **Configuration Automation:** With Configuration automation, the chances of manual errors are reduced. The process becomes more reliable and reduces time tremendously.
- **Security Baseline Hardening:** Puppet is able to apply security baseline enforcement, and remediate any drift automatically.
- **Cloud Portability:** Puppet allows you to move workload from on-premise to the cloud and vice versa. It supports AWS, Azure and GCP. This prevents cloud vendor lock-in and security standards can also be enforced on the cloud.
- **Provisioning Automation:** With Puppet we can automate deployment and creation of new servers and resources. So users and business can get their infrastructure requirements in minutes.
- **Orchestration of Patching:** Puppet can orchestrate patching across thousand of nodes.
- **Desired State Enforcement:** Using a declarative approach, Puppet achieves and maintain the desired state of your configuration and is able to auto remediate any configuration drift from your desired state.
- **Code Management:** With Puppet we can define Infrastructure as code. We can review, deploy, and test the environment configuration for Development, Testing and Production environments.
- **Reporting & Visualization:** Puppet provides Graphical tools with detailed information, making audit fast and painless.

Puppet is driving the movement to a world of unconstrained software change. Its industry-standard platform automates delivery and operation of the software that powers everything around us. More than 40,000 companies — including more than 75 percent of the Fortune 100 — use Puppet to achieve situational awareness and confidently drive software changes. Learn more at puppet.com.

Puppet Discovery

Puppet Discovery is the only solution available that allows you to **identify** all your IT resources, tells you what's running on them, and allows you to take **action**. Forget spreadsheets and clunky CMDBs for keeping track of what's in your data centers or clouds. Puppet Discovery is purpose-built for **resource discovery** and it is easy for organizations to continuously discover the resources they have across their environments.

From on-premises environments to cloud and containers, customers gain meaningful **insights** on their infrastructure resources, **deeper visibility** into what's running on those resources, and the ability to take **deliberate actions**. From a single pane of glass dashboard, Puppet Discovery provides a single source of truth to what's running, and offers customers the ability to adhere to compliance and auditing.



DEV OPS AUTOMATION

- **Know** what you have on-prem, in the cloud and inside containers, so you can start automating.
- **Plan** your cloud migration by understanding what's running in your data center.
- **Identify** end-of-life operating system versions across all your infrastructure, and decommission undesired servers.
- **Understand** your cloud inventory across multiple public cloud vendors.
- **Discover** outdated and vulnerable packages.
- Understand the delta between container images and running containers.
- **Discover** unmanaged resources and install the Puppet agent to bring them under management.

Puppet is driving the movement to a world of unconstrained software change. Its industry-standard platform automates delivery and operation of the software that powers everything around us. More than 40,000 companies — including more than 75 percent of the Fortune 100 — use Puppet to achieve situational awareness and confidently drive software changes. Learn more at puppet.com.

Puppet Pipelines

Puppet Pipelines **simplifies** continuous **integration** and continuous **delivery** in a **single dashboard**.

It empowers your developers with easy, **self-service automation**, so they can deliver applications **without delays** waiting for anyone else. It automates the build and deployment of your applications — whether they're traditionally packaged or cloud-native apps running in Kubernetes — and gives you deep visibility and audit trails for every action taken.

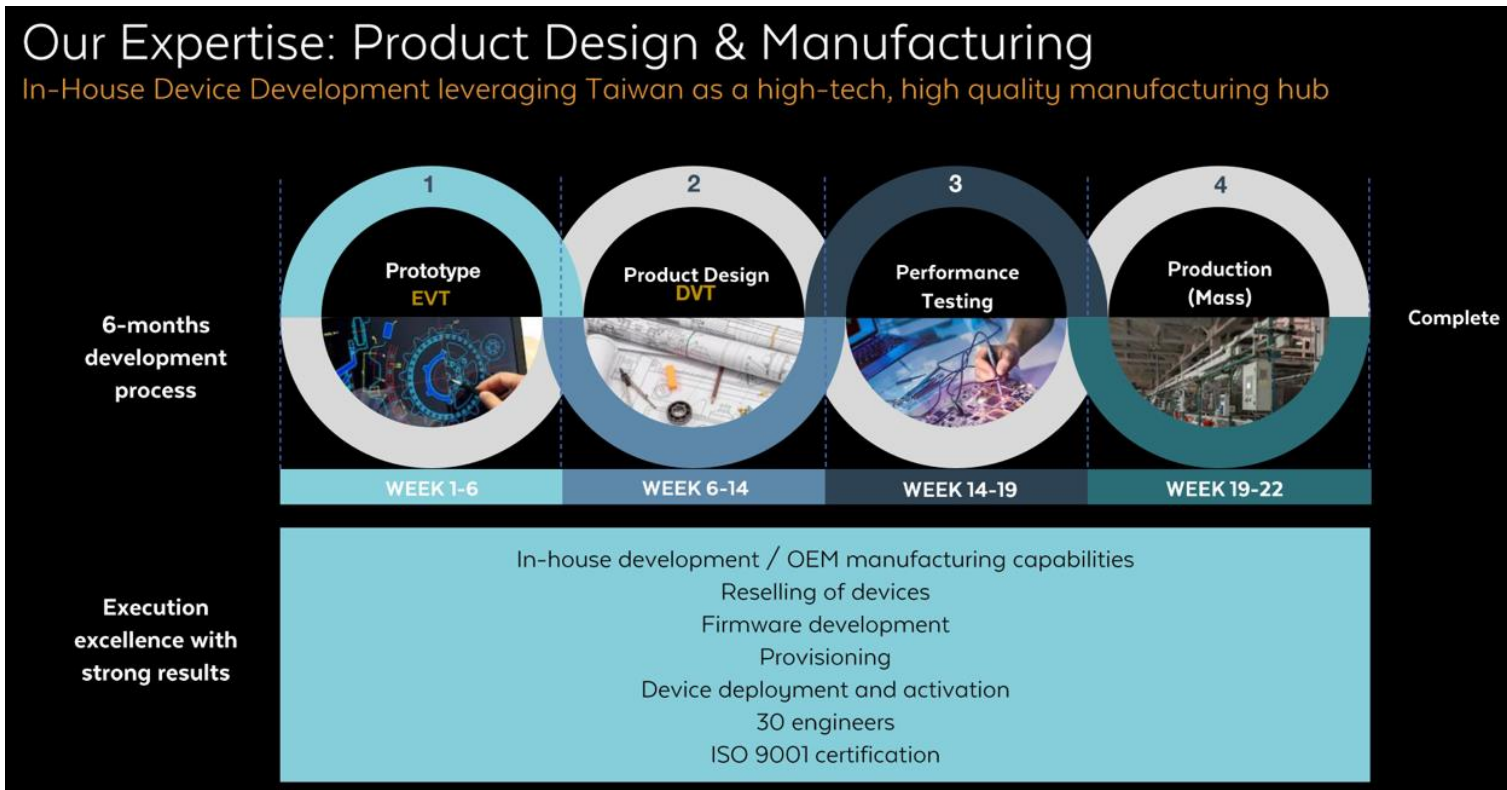
Get end-to-end continuous delivery and automation for your entire software delivery lifecycle, from the time your developers commit code to the deployment of those apps to VMs, servers and containers.



DEV OPS AUTOMATION

- *Automatically trigger application builds on every code commit*
- *Continuous Integration and Continuous Delivery*
- *Visually create continuous delivery pipelines in minutes*
- *Easily automate application deployments*
- *Build and deploy containers to Kubernetes*
- *Integrate with DevOps tools you already use*

UnaBiz is a proven massive IoT service provider who specialises in sensor product design, manufacturing, and cloud platform services across a hybrid of low-power wide area (LPWA) technologies such as Sigfox, LTE-M, NB-IoT and LoRa, to power business growth. As a five-year old scaleup, the company has deployed over 1 million sensors globally in 28 countries including Singapore, Japan, Australia and Taiwan, focusing on Smart Cities applications such as Smart Metering, Facilities Management, Asset Management and Asset Tracking. UnaBiz is based in Singapore, Taiwan and Japan. The company has been accredited with ISO 9001:2015 certification for Design of IoT Product and Provider of Network Connectivity Solutions. The company specialises in providing affordable, well-designed solutions that are energy-efficient, highly scalable and simple to deploy at a fraction of conventional cost.



MASSIVE IOT


- Smart Facilities Management
 - Provided end-to-end solution for healthcare facility that enables remote monitoring of temperature and humidity levels to allow timely intervention of anomalies
- Utility Management Gas Metering
 - Developed network controlling unit (NCU) for gas supplier that can be retrofitted on the gas meter within 5 mins. The NCU reads data hourly and sends daily reports to the client, enhancing operational efficiency due to demand & supply insights

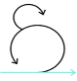
PRODUCT FEATURES


In a single platform, Workato combines:


- A Next-gen iPaaS
- API-Powered RPA
- Enterprise chat bots
- Smart data pipelines
- Low code API management
- Enterprise workflow automation


Additionally, Workato:

 Provides an intuitive build experience—no coding required

 Enables fast building and faster iterations with no gaps

 Auto-scales, deploys instantly, is always on, and requires zero DevOps

 Is optimized for easy access to all your data and apps

 Empowers a community with shared experience and ready-to-use automations

TECHNOLOGY

Use case

*Using Workato to **automate the employee onboarding process** and **turn Slack* into a ChatOps Hub** to do work on.*

ROI

- Saved 3000 man hours in just a few months
- Queried their directory **30x faster**, **saving 200+ hours** of IT time per week with one automation alone
- Set up Windows Machines for new employees in **1/4th of the time**
- Build integrations in **1/10th of the time** it takes to code

**Workato's Workbot also works with Facebook Workplace and MS Teams*



Cybersecurity

Digital Shadows is the Leader in Digital Risk Protection and was recognized in the Forrester New Wave for the strongest current offering, strategy and market presence for Digital Risk Protection and given the highest rating possible in nine criteria.

PRODUCT FEATURES



- **PHISHING PROTECTION**
- **DARK WEB MONITORING**
- **ACCOUNT TAKEOVER PREVENTION**
- **THREAT INTELLIGENCE**
- **DATA LEAKAGE DETECTION**
- **DIGITAL FOOTPRINT MONITORING**

“Digital Shadows has proven that their digital risk management service is incredibly valuable, providing my security teams with context, prioritisation, recommended actions, and even remediation options to dramatically reduce risk to Sophos.”

Norm Laudermilch, CISO of Sophos



DIGITAL RISK PROTECTION

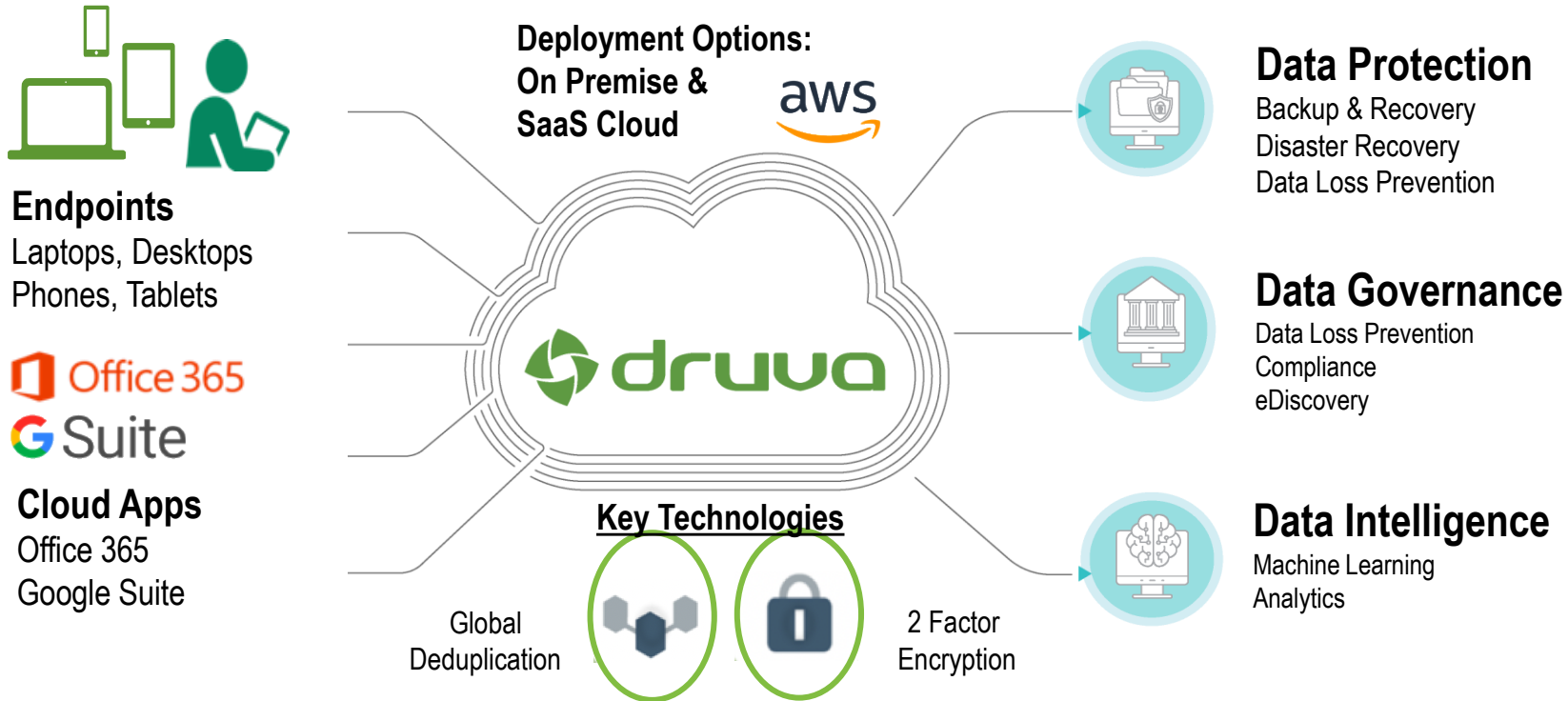
Digital Shadows minimizes digital risk by identifying unwanted exposure and protecting against external threats.

Digital Shadows SearchLight™ helps you minimize these risks by continually identifying where your assets are exposed, providing sufficient context to understand the risk and options for remediation.

Druva inSync is the analyst #1 rated Endpoint data protection and governance product providing a single pane of glass to protect, preserve and discover the information your employees work with, dramatically increasing the availability and visibility of business critical information, while reducing the risk, cost, and complexity of managing and protecting it.



inSync **PRODUCT FEATURES**



DEV END POINT BACKUP

Endpoint Data Protection and Governance
For Devices: Laptops, Desktops, Mobile
Cloud Apps: O365, GSuite

- Key Use Cases:**
- Backup and Recovery
 - Archiving
 - OS & Device Migration
 - Data Loss Prevention (DLP)
 - Federated Search
 - eDiscovery (legal hold)
 - Threat Protection. i.e.Ransomware
 - Data Compliance Monitoring
 - Defensible Deletion
 - Analytics

About Druva: Druva is the leader in cloud data protection and information management, trusted by 4500+ global organizations with over 100 PB of data under management

InsiderSecurity is an award-winning company founded by Singaporean cyber warfare experts from DSO National Labs and Mindef. We are a portfolio company of Cap Vista, the investment arm of DSTA.

InsiderSecurity Monitor

Early Breach Detection

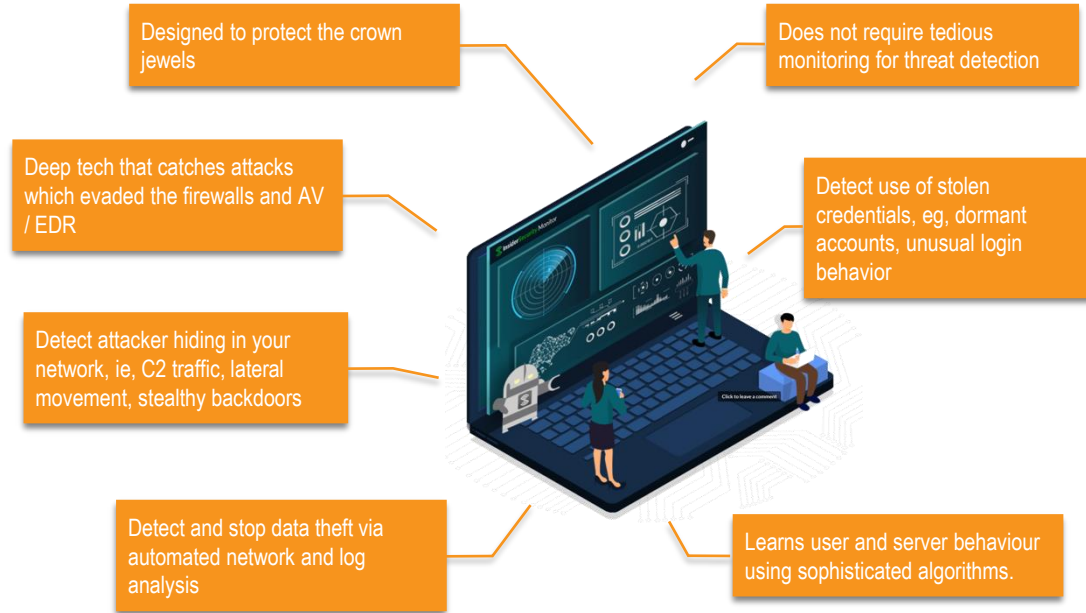
A cyber breach is inevitable today. Discover the breach very early, so as to *minimise the data loss and prevent a large data loss*.

Automated Log Review

of your crown jewels (eg database servers, application servers) and network behaviour analysis to discover the attacker early. Save thousands of hours in tedious monitoring.

Next Door Support

and customisation by trusted Singaporean cyber warfare experts.



USER AND ENTITY BEHAVIOUR ANALYTICS

Discover attacker activity very early, before there is any serious damage

- Use of stolen credentials
- Use of dormant accounts
- Attacker hiding inside the network
- Zero-day attacks

Learns user and network behaviour, without the need for rules.

Catch attacks that evade the AV or EDR. Complements the SIEM.

PRODUCT FEATURES

Microsec cyber-security ecosystem provides military grade PKI security (Micro-PKI) to IoT devices which are constrained in power and bandwidth. To support legacy infrastructure, **Microsec** provides Intrusion & tamper detection system (Micro-IDS).

1. Micro-PKI:

- a) Agent-based, delivers TLS 1.3, PKI, and Security policies; NIST CAVP certified
- b) Compliant with TR64, IEC 62443 & ISO 27001 via Microsec's Micro-Certificate
- c) Automated certificate management environment with certificate commissioning, updates & revocation. Can be used with traditional X.509 PKI security.

2. Micro-IDS:

- a) Agent-less, utilizes Machine Learning for anomaly detection
- b) Provides alert on detecting anomalies and tampering of the devices
- c) Provides open API for customization and rule based policies



IOT SECURITY

Secure IoT sensor devices and networks with Microsec's military grade security.

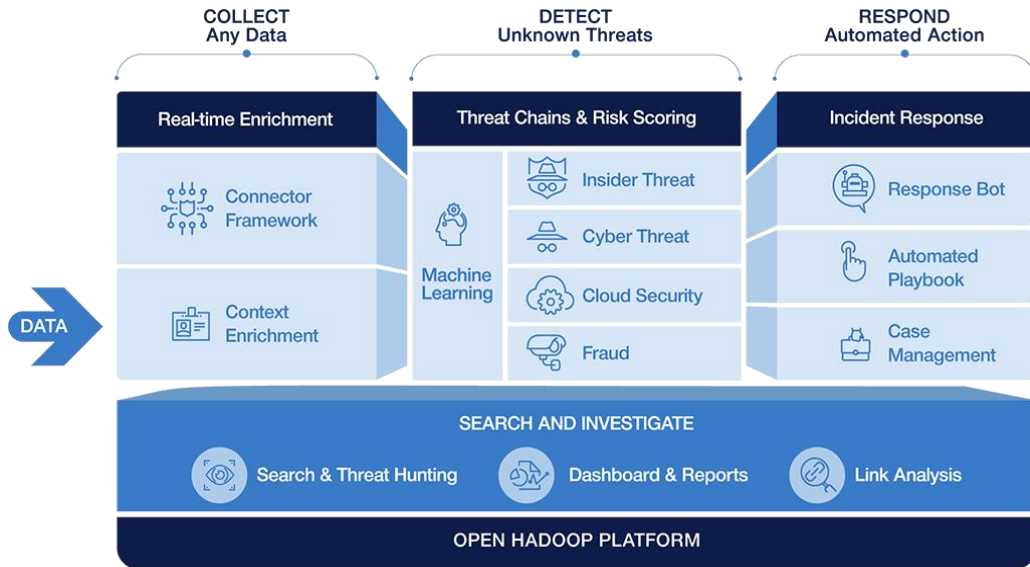
To apply, integrate our security agents inside the devices. It is cost-effective & provides easy compliance with TR64, IEC62443 & ISO27001.

It prevents from pre-shared key attacks, insider attacks, and provides device and certificate lifecycle management system.

To engage, introduce us to your device supplier/vendor or the system integrator. For legacy or existing infrastructure, use our Micro-IDS.

Securonix Named A Leader 2018 Gartner SIEM Magic Quadrant

The **Securonix** SNYPR Platform redefine the next generation of security monitoring using the power of machine learning and big data. Built on Hadoop, the SNYPR platform provides unlimited scalability and log management, behaviour analytics-based advanced threat detection, and intelligent incident response on a single platform.



Big Data Architecture

Open data platform with unlimited scalability and data retention.



Real-Time Enrichment

Transform events into meaningful insights using context.



Behaviour Analytics and Machine Learning

Use advanced analytics to find complex threats with minimal noise.



Threat Hunting and Investigation

Easily hunt for threats hiding within your data and investigate alerts in detail.



Intelligent Incident Response

Respond to threats faster with an artificial intelligence-based recommendation engine, automated playbooks, and case management.



SECURITY ANALYTICS PLATFORM

Commonly Deployed Use Cases:

Cyber Threat Analytics - Monitors security logs and network flows to detect malware infections (e.g., zero-day attacks and ransomware,) system compromise, lateral movement and other threats.

Access Analytics - analyses access privileges of users to identify rogue access and support risk-based access management and review.

Privileged Account Analytics - identifies and monitors privileged accounts for known and unknown misuse and anomalous high-risk behaviour.

Data Security Analytics - proactively identifies data exfiltration attempts coming from inside and outside the organization.

Application Security Analytics - monitors transaction and security logs for enterprise applications to detect and prevent attempts of data snooping, privilege misuse and sabotage.

Cloud Security Analytics - monitors cloud infrastructure platforms and applications for data exfiltration attempts, privilege misuse, and access anomalies.

Fraud Analytics - continuously monitors and profiles transactions on critical application to detect fraudulent transactions.

Patient Data Analytics - detects abnormal access attempts on healthcare records and supports compliance reporting.



IoT

Founded in Singapore, **Anacle** focuses on the design, development and deployment of innovative yet practical solutions for energy management and property management. Its solution, Starlight features high accuracy, premium quality, and the ability to be integrated easily in wired, wireless, or hybrid system. It empowers clients with flexibility to optimise energy management equipped with advanced technology.



Starlight Product Features

Improve Energy Efficiency

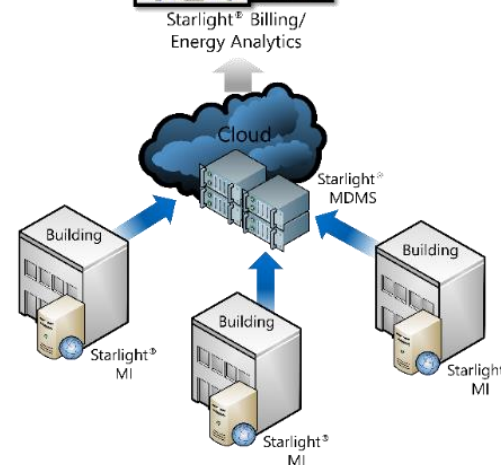
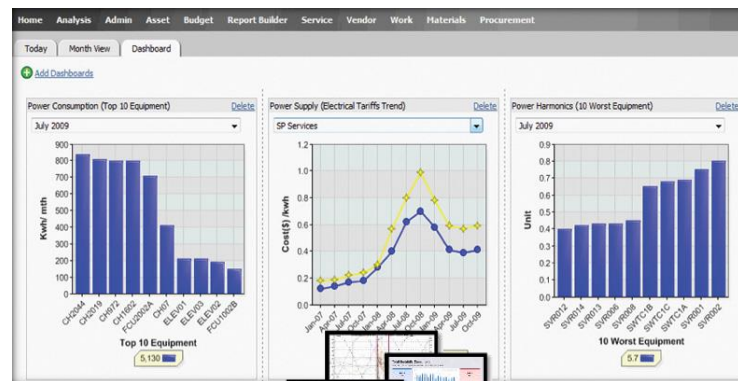
Starlight® focuses on enabling building owners the ability to manage energy used by tenants and aggregate demand to negotiate with energy retailers for better pricing. It aims to bring IT capabilities to the metering market with seamless implementation.

Consumption Forecasting

A one stop cloud-based smart energy management solution that gives you real-time access to the energy profile of your building, including information such as energy consumption, power quality, energy analytics and carbon footprint profiles

Seamless Integration

Using Zigbee Wireless Mesh Concept, Starlight® is easy to deploy, efficient and cost effective. It does not require additional data cabling, local WiFi, nor cellular services to support the automated meter reading in your building. Starlight® will be the perfect energy management solution if you need to retrofit your existing buildings



ENERGY MANAGEMENT

Starlight energy management solution is implemented in over 150 buildings in Singapore and has since been providing building owners a comprehensive energy monitoring system, empowering them to reduce energy wastage, associated costs, and ultimately, align to overarching environmental sustainability goals.

Envision Digital Delivers Digital Transformation



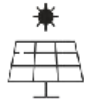
Envision
digital

SG:D
ACCREDITED

Proven value delivered from data intensive applications at scale



Smart
Plant



Smart
Renewables



Smart Building



Smart City



EnOS™ Intelligent IoT OS

Already used to manage over 100GW of energy assets – over 60 million connected devices worldwide



Cost efficient
IoT solution



Real-time
analytics



Open
innovation



ENERGY MANAGEMENT

- *Smart cities including smart government network*
- *Smart buildings with energy efficiency solutions, Chiller optimisation, energy storage, demand response*
- *Monitoring, analytics and predictive maintenance of connected assets*
- *Digitize asset data for energy efficiency, process efficiency and asset optimisation*

igloohome designs **smart access** solutions for smart management of properties and infrastructure. We have designed **unique technology** that has enabled igloohome locks to enable **remote access** without wifi connection, making our solutions **more reliable and secure** than those in the market. Based in Singapore, our products have been **sold in over 80 countries**.

PRODUCT FEATURES



Smart Access Management



Minimal Setup Cost



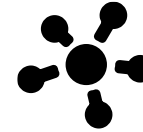
Unlimited Bluetooth Key and PIN code



Remote Access & Control



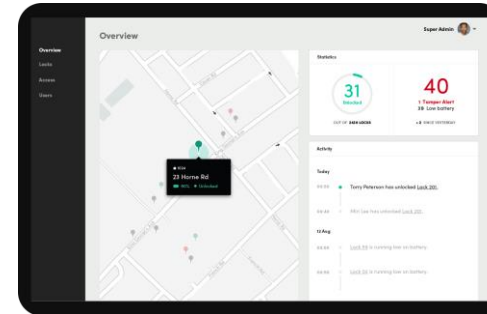
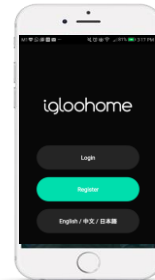
Wireless Connectivity



Open Source API and SDK



Users and Access Management



ENTERPRISE SMART ACCESS MANAGEMENT

USE CASES

A **Singapore Government agency** has properties for rental.

With igloohome smart locks, they **no longer have the need to exchange keys**, deal with lost keys, sending locksmiths to the island to change the locks and **worry about duplicated keys**.

Now they can simply **issue duration-based PINs** using our igloohome **mobile app** with the option upgrade to an **enterprise dashboard**.

PRODUCT FEATURES

Willowmore develops solutions that protects Critical Infrastructure – Keeping Singapore Safe. Our IoT enabled solutions are designed to ensure security, traceability and automation. Examples of verticals where our solutions have been deployed: Utilities, Telecommunications, Data Centers and Secure installations.

Our **Enterprise Grade Hardware and Software Systems** have been selected and deployed across APAC by leading Tower Companies, Telecoms Operator and Network Equipment Vendors.

The Suite of Smart locks and Software solutions used to secure Critical Infrastructure includes our Robust Enterprise Software WMSenseHub, Heavy Duty Smart Padlocks, Logistics Padlocks and Cabinet locks. These solutions are compatible with our Patented NB-IoT Gateway – this provides our customers the option to operate a **fully supervised system**. Environmental sensors can also be added to enrich the site visibility.

Our solution facilitates **Automation, AI powered analytics, Traceability and Accountability**. We support our customers to digitalize their mechanical locks and enrich their visibility of:

- Who has accessed their site
- Why the access is required
- When was the access
- How long was the access



IOT - ACCESS CONTROL

Case Study 1 : **DIGITALIZING ACCESS REQUEST AT SINGAPORE TOWN COUNCILS (TC)**

Singapore TC are still using vulnerable mechanical locking system to secure their critical maintenance rooms. Willowmore eliminate the problem by deploying the smart locks with biometrical facial recognition capabilities, allow Singapore TC to have real-time monitoring, and increase contractors efficiency

Case Study 2: **LEVELING UP WASTE MANAGEMENT WITH PUB**

Willowmore is working closely together with PUB to trace loading and disposal of waste, automate reports and prevent illegal discharge. To achieve this, Willowmore has upgrade their hardware and customize our website to have dynamic geo-fencing



Media Tech and Others



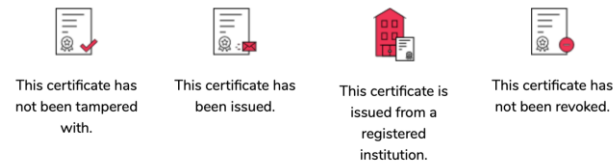
PRODUCT FEATURES

Accredify provides a turnkey portal for a simplified and digitally seamless issuance of certificates. Also, it allows to issue, receive and verify digital tamper-proof credentials such as education & training certificates for any organization issuing certificates. Their Software-as-a-Service acts as the application layer for organizations to access the GovTech-developed [OpenCerts Schema](#) with zero learning curve.

When a certificate is passed into the verifier, it instantly conducts a tamper-proof check, issuance check and revocation check. Only if all checks are passed, would the certificate be verified as authentic.

VERIFICATION RESULTS

STATUS
VERIFIED
WHAT DOES IT MEAN?



This certificate has not been tampered with.

This certificate has been issued.

This certificate is issued from a registered institution.

This certificate has not been revoked.



SG:D SPARK | BLOCKCHAIN

As an education institute, accreditation body or training school, the issuance of digital tamper-proof certificates can help reduce your administrative time and costs significantly.

Benefits:

- *Paperless certificate issuance*
- *Automated verification process*
- *Automated expiry date if required*
- *Possibility of revocation*
- *No need for certified true copies*
- *100% tamper-proof*

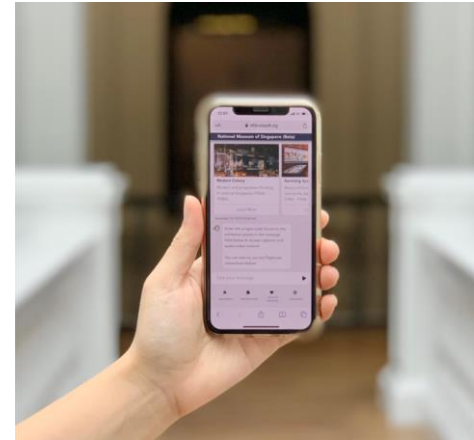


VOUCH

Vouch designs digital solutions for companies in the travel and tourism industry with the objectives of improving productivity and enhancing the user experience with an end-to-end digital platform.

Since launching in 2016, Vouch has steadily garnered recognition for its work in catalysing digital transformation in hospitality and attractions, receiving the Singapore Tourism Awards' Best Business Innovation award in 2019, as well as being named one of PhocusWire's "Hot 25 startups for 2021". The company has also been shortlisted to participate in Facebook's prestigious Startup Station Accelerator and the Amadeus Next Startup programme.

Accessible via web with no additional download required, Vouch's omni-channel and multi-language platform is designed to empower users with seamless access to digital services and engaging content. For hotels, Vouch helps to maximise operational efficiency with popular modules such as Facilities Booking, Contactless Dining and Digital Concierge.



Digital Concierge

Offers solutions that help create a seamless, end-to-end digital experience for users and customers.

Creates interactive and gamified experiences to further immerse users in services, products and brands.

Analyses insights on user behaviour for improved operations and campaigns.

Automates simple tasks to enhance productivity for backend operations where necessary.